

# *fusionqld*

*Your Total PVC Solution*

## *PE Catalogue*

### *Queensland*

Units 3 & 4, 8 Action St,  
Noosaville Qld 4566  
T 07 5474 3000  
F 07 5474 1700  
E [sales@fusionqld.com.au](mailto:sales@fusionqld.com.au)

ABN: 42 987 067 369

### *Victoria*

Unit 2, 22-24 Rhur St,  
Dandenong Sth Vic 3175  
T 0401 491 111  
F 07 5474 1700  
E [vicsales@fusionqld.com.au](mailto:vicsales@fusionqld.com.au)

*W [fusionqld.com.au](http://fusionqld.com.au)*

# ELECTROFUSION FITTINGS - AS/NZS 4129

Water PN16 - Gas PN10 - PE100

## Coupler SDR11



Size	Code
20mm	EFC20
25mm	EFC25
32mm	EFC32
40mm	EFC40
50mm	EFC50
63mm	EFC63
75mm	EFC75
90mm	EFC90
110mm	EFC110
125mm	EFC125
140mm	EFC140
160mm	EFC160
180mm	EFC180
200mm	EFC200
225mm	EFC225
250mm	EFC250
280mm	EFC280
315mm	EFC315
355mm	EFC355
400mm	EFC400
450mm	EFC450
500mm	EFC500
560mm	EFC560
630mm	EFC630
710mm	EFC710
800mm	EFC800
900mm	EFC900
1000mm	EFC1000
1200mm	EFC1200

## Coupler SDR17



Size	Code
450mm	EFC45017
500mm	EFC50017
560mm	EFC56017
630mm	EFC63017
710mm	EFC71017
800mm	EFC80017
900mm	EFC90017
1000mm	EFC100017
1200mm	EFC120017

# ELECTROFUSION FITTINGS - AS/NZS 4129

Water PN16 - Gas PN10 - SDR11 - PE100

## 22.5° Elbow



Size	Code
180mm	EFE22180

## 45° Elbow



Size	Code
20mm	EFE4520
25mm	EFE4525
32mm	EFE4532
40mm	EFE4540
50mm	EFE4550
63mm	EFE4563
75mm	EFE4575
90mm	EFE4590
110mm	EFE45110
125mm	EFE45125
160mm	EFE45160
180mm	EFE45180
200mm	EFE45200
225mm	EFE45225

## 90° Elbow



Size	Code
20mm	EFE9020
25mm	EFE9025
32mm	EFE9032
40mm	EFE9040
50mm	EFE9050
63mm	EFE9063
75mm	EFE9075
90mm	EFE9090
110mm	EFE90110
125mm	EFE90125
160mm	EFE90160
180mm	EFE90180
200mm	EFE90200
225mm	EFE90225

## Alcohol Wipes




Size	Code
75 per Tub	EFAW75

# ELECTROFUSION FITTINGS - AS/NZS 4129

Water PN16 - Gas PN10 - SDR11 - PE100

Tee	Size	Code
	20mm	EFT20
	25mm	EFT25
	32mm	EFT32
	40mm	EFT40
	50mm	EFT50
	63mm	EFT63
	75mm	EFT75
	90mm	EFT90
	110mm	EFT110
	125mm	EFT125
	160mm	EFT160
	180mm	EFT180
	225mm	EFT225

Reducing Tee	Size	Code
	32mm x 20mm	EFTR3220
	32mm x 25mm	EFTR3225
	50mm x 40mm	EFTR5040
	63mm x 40mm	EFTR6340
	63mm x 50mm	EFTR6350
	90mm x 63mm	EFTR9063
	110mm x 63mm	EFTR11063
	110mm x 90mm	EFTR11090
	125mm x 90mm	EFTR12590
	160mm x 110mm	EFTR160110
	180mm x 125mm	EFTR180110

Reducer	Size	Code
	25mm x 20mm	EFR2520
	32mm x 20mm	EFR3220
	32mm x 25mm	EFR3225
	40mm x 20mm	EFR4020
	40mm x 25mm	EFR4025
	40mm x 32mm	EFR4032
	50mm x 25mm	EFR5025
	50mm x 32mm	EFR5032
	50mm x 40mm	EFR5040
	63mm x 32mm	EFR6332
	63mm x 40mm	EFR6340
	63mm x 50mm	EFR6350
	75mm x 50mm	EFR7550
	75mm x 63mm	EFR7563
	90mm x 63mm	EFR9063
	110mm x 63mm	EFR11063
	110mm x 90mm	EFR11090
	125mm x 90mm	EFR12590
	125mm x 110mm	EFR125110
	160mm x 90mm	EFR16090
	160mm x 110mm	EFR160110
	180mm x 125mm	EFR180125
225mm x 160mm	EFR225160	

# ELECTROFUSION FITTINGS - AS/NZS 4129

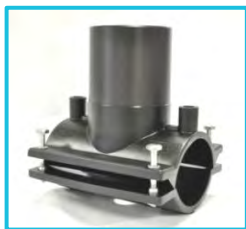
Water PN16 - Gas PN10 - SDR11 - PE100

## End Cap



Size	Code
20mm	EFCAP20
25mm	EFCAP25
32mm	EFCAP32
40mm	EFCAP40
50mm	EFCAP50
63mm	EFCAP63
75mm	EFCAP75
90mm	EFCAP90
110mm	EFCAP110
125mm	EFCAP125
140mm	EFCAP140
160mm	EFCAP160
180mm	EFCAP180
200mm	EFCAP200
225mm	EFCAP225
250mm	EFCAP250
280mm	EFCAP280
315mm	EFCAP315

## Branch Saddle With Underpart



Size	Code
63mm x 40mm	EFBSU6340
63mm x 63mm	EFBSU6363
75mm x 40mm	EFBSU7540
75mm x 63mm	EFBSU7563
90mm x 40mm	EFBSU9040
90mm x 63mm	EFBSU9063
90mm x 90mm	EFBSU9090
110mm x 63mm	EFBSU11063
110mm x 90mm	EFBSU11090
125mm x 63mm	EFBSU12563
125mm x 90mm	EFBSU12590
140mm x 63mm	EFBSU14063
160mm x 63mm	EFBSU16063
160mm x 90mm	EFBSU16090
160mm x 110mm	EFBSU160110
180mm x 63mm	EFBSU18063
180mm x 90mm	EFBSU18090
180mm x 110mm	EFBSU180110
200mm x 63mm	EFBSU20063
200mm x 90mm	EFBSU20090
225mm x 63mm	EFBSU22563
225mm x 90mm	EFBSU22590
250mm x 90mm	EFBSU25090

# ELECTROFUSION FITTINGS - AS/NZS 4129

Water PN16 - Gas PN10 - SDR11 - PE100

## Tapping Tee With Underpart



Size	Code
40mm x 20mm	EFTTU4020
40mm x 25mm	EFTTU4025
40mm x 32mm	EFTTU4032
50mm x 25mm	EFTTU5025
50mm x 32mm	EFTTU5032
63mm x 25mm	EFTTU6325
63mm x 32mm	EFTTU6332
63mm x 40mm	EFTTU6340
63mm x 63mm	EFTTU6363
75mm x 32mm	EFTTU7532
90mm x 32mm	EFTTU9032
90mm x 63mm	EFTTU9063
110mm x 32mm	EFTTU11032
110mm x 40mm	EFTTU11040
110mm x 63mm	EFTTU11063
125mm x 32mm	EFTTU12532
125mm x 63mm	EFTTU12563
160mm x 32mm	EFTTU16032
160mm x 40mm	EFTTU16040
160mm x 63mm	EFTTU16063
180mm x 32mm	EFTTU18032
180mm x 63mm	EFTTU18063
200mm x 32mm	EFTTU20032
200mm x 63mm	EFTTU20063
225mm x 32mm	EFTTU22532
225mm x 63mm	EFTTU22563

## Flextee Tapping Tee



Size	Code
63mm x 20mm	EFFTT6320
63mm x 25mm	EFFTT6325
63mm x 32mm	EFFTT6332
75mm x 20mm	EFFTT7520
75mm x 25mm	EFFTT7525
75mm x 32mm	EFFTT7532
90mm x 20mm	EFFTT9020
90mm x 25mm	EFFTT9025
90mm x 32mm	EFFTT9032
110mm x 20mm	EFFTT11020
110mm x 25mm	EFFTT11025
110mm x 32mm	EFFTT11032
125mm x 20mm	EFFTT12520
125mm x 25mm	EFFTT12525
125mm x 32mm	EFFTT12532
160mm x 20mm	EFFTT16020
160mm x 25mm	EFFTT16025
160mm x 32mm	EFFTT16032
180mm x 20mm	EFFTT18020
180mm x 25mm	EFFTT18025
180mm x 32mm	EFFTT18032

# ELECTROFUSION FITTINGS - AS/NZS 4129

Water PN16 - Gas PN10 - SDR11 - PE100

## Transition Coupler Male



Size	Ctn Qty	Code
20mm x 1/2"		EFTCM2012
25mm x 3/4"		EFTCM2534
32mm x 1/2"		EFTCM3212
32mm x 3/4"		EFTCM3234
32mm x 1"		EFTCM321
32mm x 1 1/4"		EFTCM32114
32mm x 1 1/2"		EFTCM32112
40mm x 1"		EFTCM401
40mm x 1 1/4"		EFTCM40114
40mm x 1 1/2"		EFTCM40112
40mm x 2"		EFTCM402
50mm x 1"		EFTCM501
50mm x 1 1/4"		EFTCM50114
50mm x 1 1/2"		EFTCM50112
50mm x 2"		EFTCM502
63mm x 1 1/4"		EFTCM63114
63mm x 1 1/2"		EFTCM63112
63mm x 2"		EFTCM632
75mm x 2"		EFTCM752
75mm x 2 1/2"		EFTCM75212
90mm x 3"		EFTCM903
110mm x 4"		EFTCM1104
125mm x 4"		EFTCM1254

## Transition Coupler Female



Size	Code
20mm x 1/2"	EFTCF2012
25mm x 3/4"	EFTCF2534
32mm x 3/4"	EFTCF3234
32mm x 1"	EFTCF321
32mm x 1 1/4"	EFTCF32114
32mm x 1 1/2"	EFTCF32112
40mm x 1"	EFTCF401
40mm x 1 1/4"	EFTCF40114
40mm x 1 1/2"	EFTCF40112
40mm x 2"	EFTCF402
50mm x 1"	EFTCF501
50mm x 1 1/4"	EFTCF50114
50mm x 1 1/2"	EFTCF50112
50mm x 2"	EFTCF502
63mm x 1 1/4"	EFTCF63114
63mm x 1 1/2"	EFTCF63112
63mm x 2"	EFTCF632
75mm x 2"	EFTCF752
75mm x 2 1/2"	EFTCF75212
90mm x 3"	EFTCF903
110mm x 4"	EFTCF1104
125mm x 4"	EFTCF1254

# ELECTROFUSION FITTINGS - AS/NZS 4129

Water PN16 - Gas PN10 - SDR11 - PE100

## 45° Transition Elbow Male



Size	Code
20mm x 1/2"	EFTEM452012
25mm x 3/4"	EFTEM452534
32mm x 1"	EFTEM45321
40mm x 1 1/4"	EFTEM4540114
50mm x 1 1/2"	EFTEM4550112
63mm x 2"	EFTEM45632

## 45° Transition Elbow Female



Size	Code
20mm x 1/2"	EFTEF452012
25mm x 3/4"	EFTEF452534
32mm x 1"	EFTEF45321
40mm x 1 1/4"	EFTEF4540114
50mm x 1 1/2"	EFTEF4550112
63mm x 2"	EFTEF45632

## 90° Transition Elbow Male



Size	Code
20mm x 1/2"	EFTEM902012
25mm x 3/4"	EFTEM902534
32mm x 1"	EFTEM90321
40mm x 1 1/4"	EFTEM9040114
50mm x 1 1/2"	EFTEM9050112
63mm x 2"	EFTEM90632

## 90° Transition Elbow Female



Size	Code
20mm x 1/2"	EFTEF902012
25mm x 3/4"	EFTEF902534
32mm x 1"	EFTEF90321
40mm x 1 1/4"	EFTEF9040114
50mm x 1 1/2"	EFTEF9050112
63mm x 2"	EFTEF90632

## Transition Coupler Stainless Steel



Size	Ctn Qty	Code
<b>Male</b> 20mm x 1/2"		EFTCMSS2012
25mm x 3/4"		EFTCMSS2534
32mm x 1"		EFTCMSS321
40mm x 1 1/4"		EFTCMSS40114
50mm x 1 1/2"		EFTCMSS50112
63mm x 2"		EFTCMSS632

## Transition Coupler Stainless Steel



Size	Ctn Qty	Code
<b>Female</b> 20mm x 1/2"		EFTCFSS2012
25mm x 3/4"		EFTCFSS2534
32mm x 1"		EFTCFSS321
40mm x 1 1/4"		EFTCFSS40114
50mm x 1 1/2"		EFTCFSS50112
63mm x 2"		EFTCFSS632



# GALVANISED BACKING RINGS

AS 2129 - AS 4087

## Galvanised Backing Ring



**Table D**

Size	Code
110mm	BWBRD110
125/100mm	BWBRD125100
160mm	BWBRD160
180mm	BWBRD180
200mm	BWBRD200
225mm	BWBRD225
250mm	BWBRD250
280mm	BWBRD280
315mm	BWBRD315
355mm	BWBRD355
400mm	BWBRD400
450mm	BWBRD450
500mm	BWBRD500
560mm	BWBRD560
630mm	BWBRD630
710mm	BWBRD710
800mm	BWBRD800
900mm	BWBRD900
1000mm	BWBRD1000

## Galvanised Backing Ring





**Table E**

Size	Code
20mm	BWBRE20
25mm	BWBRE25
32mm	BWBRE32
40mm	BWBRE40
50mm	BWBRE50
63mm	BWBRE63
75mm	BWBRE75
90mm	BWBRE90
110mm	BWBRE110
125/100mm	BWBRE125100
125mm	BWBRE125
140mm	BWBRE140
160mm	BWBRE160
180mm	BWBRE180
200mm	BWBRE200
225mm	BWBRE225
250mm	BWBRE250
280mm	BWBRE280
315mm	BWBRE315
355mm	BWBRE355
400mm	BWBRE400
450mm	BWBRE450
500mm	BWBRE500
560mm	BWBRE560
630mm	BWBRE630
710mm	BWBRE710
800mm	BWBRE800
900mm	BWBRE900
1000mm	BWBRE1000

# BACKING RINGS & BLIND FLANGES

AS 2129 - AS 4087

Galvanised Backing Ring	Size	Code
	<b>ANSI 150</b> 20mm	BWBRA20
	25mm	BWBRA25
	32mm	BWBRA32
	40mm	BWBRA40
	50mm	BWBRA50
	63mm	BWBRA63
	75mm	BWBRA75
	90mm	BWBRA90
	110mm	BWBRA110
	125mm	BWBRA125
	140mm	BWBRA140
	160mm	BWBRA160
	180mm	BWBRA180
	200mm	BWBRA200
	225mm	BWBRA225
	250mm	BWBRA250
	280mm	BWBRA280
	315mm	BWBRA315
	355mm	BWBRA355
	400mm	BWBRA400
450mm	BWBRA450	
500mm	BWBRA500	
560mm	BWBRA560	
630mm	BWBRA630	

Galvanised Blind Flange	Size	Code
	<b>Table D</b> 250mm	BWBFD250
	315mm	BWBFD315
	355mm	BWBFD355
	400mm	BWBFD400
<b>Table E</b>	50mm	BWBFE50
	63mm	BWBFE63
	75mm	BWBFE75
	90mm	BWBFE90
	110mm	BWBFE110
	125mm	BWBFE125
	160mm	BWBFE160
	200mm	BWBFE200
	250mm	BWBFE250
	315mm	BWBFE315
	355mm	BWBFE355
	400mm	BWBFE400
	450mm	BWBFE450
	500mm	BWBFE500
	560mm	BWBFE560
	630mm	BWBFE630

# BACKING RINGS & BLIND FLANGES

AS 2129 - AS 4087

## Galvanised Blind Flange



	Size	Code
<b>ANSI 150</b>	50mm	BWBFA50
	63mm	BWBFA63
	90mm	BWBFA90
	110mm	BWBFA110
	160mm	BWBFA160
	200mm	BWBFA200
	250mm	BWBFA250
	315mm	BWBFA315
	355mm	BWBFA355
	400mm	BWBFA400
	450mm	BWBFA450
	500mm	BWBFA500

## Stainless Steel Backing Ring



	Size	Code
<b>Table D</b>	110mm	BWBRSSD110
	125/100mm	BWBRSSD125100
	160mm	BWBRSSD160
	180mm	BWBRSSD180
	200mm	BWBRSSD200
	225mm	BWBRSSD225
	250mm	BWBRSSD250
	280mm	BWBRSSD280
	315mm	BWBRSSD315
	355mm	BWBRSSD355
	400mm	BWBRSSD400
	450mm	BWBRSSD450
	500mm	BWBRSSD500
	560mm	BWBRSSD560
	630mm	BWBRSSD630
	710mm	BWBRSSD710
	800mm	BWBRSSD800
	900mm	BWBRSSD900
	1000mm	BWBRSSD1000

## Stainless Steel Backing Ring



	Size	Code
<b>Table E</b>	20mm	BWBRSSSE20
	25mm	BWBRSSSE25
	32mm	BWBRSSSE32
	40mm	BWBRSSSE40
	50mm	BWBRSSSE50
	63mm	BWBRSSSE63
	75mm	BWBRSSSE75
	90mm	BWBRSSSE90
	110mm	BWBRSSSE110
	125/100mm	BWBRSSSE125100

# STAINLESS STEEL BACKING RINGS

AS 2129 - AS 4087

## Stainless Steel Backing Ring

Size

Code



**Table E**

125mm	BWBRSSSE125
140mm	BWBRSSSE140
160mm	BWBRSSSE160
180mm	BWBRSSSE180
200mm	BWBRSSSE200
225mm	BWBRSSSE225
250mm	BWBRSSSE250
280mm	BWBRSSSE280
315mm	BWBRSSSE315
355mm	BWBRSSSE355
400mm	BWBRSSSE400
450mm	BWBRSSSE450
500mm	BWBRSSSE500
560mm	BWBRSSSE560
630mm	BWBRSSSE630
710mm	BWBRSSSE710
800mm	BWBRSSSE800
900mm	BWBRSSSE900
1000mm	BWBRSSSE1000

## Stainless Steel Backing Ring

Size

Code



**ANSI 150**

20mm	BWBRSSA20
25mm	BWBRSSA25
32mm	BWBRSSA32
40mm	BWBRSSA40
50mm	BWBRSSA50
63mm	BWBRSSA63
75mm	BWBRSSA75
90mm	BWBRSSA90
110mm	BWBRSSA110
125mm	BWBRSSA125
140mm	BWBRSSA140
160mm	BWBRSSA160
180mm	BWBRSSA180
200mm	BWBRSSA200
250mm	BWBRSSA250
280mm	BWBRSSA280
315mm	BWBRSSA315
355mm	BWBRSSA355
400mm	BWBRSSA400
450mm	BWBRSSA450
500mm	BWBRSSA500
560mm	BWBRSSA560
630mm	BWBRSSA630

# BUTT WELD FITTINGS AS/NZS 4129

PE100 PN16 - SDR11

## Stub Flange Long SDR11



Size	Code
20mm	BWSFL1120
25mm	BWSFL1125
32mm	BWSFL1132
40mm	BWSFL1140
50mm	BWSFL1150
63mm	BWSFL1163
75mm	BWSFL1175
90mm	BWSFL1190
110mm	BWSFL11110
125mm	BWSFL11125
140mm	BWSFL11140
160mm	BWSFL11160
180mm	BWSFL11180
200mm	BWSFL11200
225mm	BWSFL11225
250mm	BWSFL11250
280mm	BWSFL11280
315mm	BWSFL11315
355mm	BWSFL11355
400mm	BWSFL11400
450mm	BWSFL11450
500mm	BWSFL11500
560mm	BWSFL11560
630mm	BWSFL11630

## Threaded Male Adaptor SDR11



Size	Code
<b>BSPT</b> 20mm x 1/2"	BWAM2012
25mm x 3/4"	BWAM2534
32mm x 1"	BWAM321
40mm x 1 1/4"	BWAM40114
50mm x 1 1/2"	BWAM50112
63mm x 2"	BWAM632
75mm x 2 1/2"	BWAM75212
90mm x 3"	BWAM903
110mm x 4"	BWAM1104

## Threaded Female Adaptor SDR11



Size	Code
<b>BSPT</b> 20mm x 1/2"	BWAF2012
25mm x 3/4"	BWAF2534
32mm x 1"	BWAF321
40mm x 1 1/4"	BWAF40114
50mm x 1 1/2"	BWAF50112
63mm x 2"	BWAF632
75mm x 2 1/2"	BWAF75212

## Maxi Stub with S/S Backing Ring



Size	Code
<b>Table D</b> 90mm x 3"	BWMSD903
90mm x 3 1/4"	BWMSD9034
110mm x 4"	BWMSD1104
125mm x 4"	BWMSD1254
180mm x 6"	BWMSD1806
250mm x 8"	BWMSD2508

# BUTT WELD FITTINGS AS/NZS 4129

PE100 PN16 - SDR11

## Maxi Stub with S/S Backing Ring



Table D	Size	Code
	315mm x 10"	BWMSD31510
	355mm x 12"	BWMSD35512
	450mm x 16"	BWMSD45016

## Reducing Tee Long SDR11



Size	Code
50mm x 25mm	BWTRL115025
50mm x 32mm	BWTRL115032
50mm x 40mm	BWTRL115040
63mm x 32mm	BWTRL116332
63mm x 40mm	BWTRL116340
63mm x 50mm	BWTRL116350
75mm x 32mm	BWTRL117532
75mm x 50mm	BWTRL117550
75mm x 63mm	BWTRL117563
90mm x 63mm	BWTRL119063
90mm x 75mm	BWTRL119075
110mm x 63mm	BWTRL1111063
110mm x 75mm	BWTRL1111075
110mm x 90mm	BWTRL1111090
125mm x 63mm	BWTRL1112563
125mm x 90mm	BWTRL1112590
125mm x 110mm	BWTRL11125110
140mm x 90mm	BWTRL1114090
140mm x 110mm	BWTRL11140110
140mm x 125mm	BWTRL11140125
160mm x 63mm	BWTRL1116063
160mm x 75mm	BWTRL1116075
160mm x 90mm	BWTRL1116090
160mm x 110mm	BWTRL11160110
180mm x 90mm	BWTRL1118090
180mm x 110mm	BWTRL11180110
180mm x 125mm	BWTRL11180125
180mm x 160mm	BWTRL11180160
200mm x 63mm	BWTRL1120063
200mm x 90mm	BWTRL1120090
200mm x 110mm	BWTRL11200110
200mm x 125mm	BWTRL11200125
200mm x 160mm	BWTRL11200160
225mm x 75mm	BWTRL1122575
225mm x 90mm	BWTRL1122590
225mm x 110mm	BWTRL11225110
225mm x 125mm	BWTRL11225125
225mm x 160mm	BWTRL11225160
225mm x 180mm	BWTRL11225180
250mm x 90mm	BWTRL1125090
250mm x 110mm	BWTRL11250110
250mm x 125mm	BWTRL11250125
250mm x 160mm	BWTRL11250160
250mm x 200mm	BWTRL11250200
250mm x 225mm	BWTRL11250225

# BUTT WELD FITTINGS AS/NZS 4129

PE100 PN16 - SDR11

## Reducing Tee Long SDR11



Size	Code
280mm x 110mm	BWTRL11280110
280mm x 160mm	BWTRL11280160
280mm x 200mm	BWTRL11280200
280mm x 225mm	BWTRL11280225
280mm x 250mm	BWTRL11280250
315mm x 90mm	BWTRL1131590
315mm x 110mm	BWTRL11315110
315mm x 160mm	BWTRL11315160
315mm x 180mm	BWTRL11315180
315mm x 200mm	BWTRL11315200
315mm x 225mm	BWTRL11315225
315mm x 250mm	BWTRL11315250

## Tee Long SDR11



Size	Code
20mm	BWTL1120
25mm	BWTL1125
32mm	BWTL1132
40mm	BWTL1140
50mm	BWTL1150
63mm	BWTL1163
75mm	BWTL1175
90mm	BWTL1190
110mm	BWTL11110
125mm	BWTL11125
140mm	BWTL11140
160mm	BWTL11160
180mm	BWTL11180
200mm	BWTL11200
225mm	BWTL11225
250mm	BWTL11250
280mm	BWTL11280
315mm	BWTL11315
355mm	BWTL11355
400mm	BWTL11400

## End Cap Long SDR11



Size	Code
20mm	BWCAPL1120
25mm	BWCAPL1125
32mm	BWCAPL1132
40mm	BWCAPL1140
50mm	BWCAPL1150
63mm	BWCAPL1163
75mm	BWCAPL1175
90mm	BWCAPL1190
110mm	BWCAPL11110
125mm	BWCAPL11125
140mm	BWCAPL11140
160mm	BWCAPL11160
180mm	BWCAPL11180
200mm	BWCAPL11200

# BUTT WELD FITTINGS AS/NZS 4129

PE100 PN16 - SDR11

## End Cap Long SDR11



Size	Code
225mm	BWCAPL11225
250mm	BWCAPL11250
280mm	BWCAPL11280
315mm	BWCAPL11315
355mm	BWCAPL11355
400mm	BWCAPL11400

## 45° Elbow Long SDR11



Size	Code
20mm	BWEL114520
25mm	BWEL114525
32mm	BWEL114532
40mm	BWEL114540
50mm	BWEL114550
63mm	BWEL114563
75mm	BWEL114575
90mm	BWEL114590
110mm	BWEL1145110
125mm	BWEL1145125
140mm	BWEL1145140
160mm	BWEL1145160
180mm	BWEL1145180
200mm	BWEL1145200
225mm	BWEL1145225
250mm	BWEL1145250
280mm	BWEL1145280
315mm	BWEL1145315
355mm	BWEL1145355
400mm	BWEL1145400

## 90° Elbow Long SDR11



Size	Code
20mm	BWEL119020
25mm	BWEL119025
32mm	BWEL119032
40mm	BWEL119040
50mm	BWEL119050
63mm	BWEL119063
75mm	BWEL119075
90mm	BWEL119090
110mm	BWEL1190110
125mm	BWEL1190125
140mm	BWEL1190140
160mm	BWEL1190160
180mm	BWEL1190180
200mm	BWEL1190200
225mm	BWEL1190225
250mm	BWEL1190250
280mm	BWEL1190280
315mm	BWEL1190315
355mm	BWEL1190355
400mm	BWEL1190400



# BUTT WELD FITTINGS AS/NZS 4129

PE100 PN16 - SDR11

## Reducer Long SDR11



Size	Code
25mm x 20mm	BWRL112520
32mm x 20mm	BWRL113220
32mm x 25mm	BWRL113225
40mm x 20mm	BWRL114020
40mm x 25mm	BWRL114025
40mm x 32mm	BWRL114032
50mm x 25mm	BWRL115025
50mm x 32mm	BWRL115032
50mm x 40mm	BWRL115040
63mm x 25mm	BWRL116325
63mm x 32mm	BWRL116332
63mm x 40mm	BWRL116040
63mm x 50mm	BWRL116350
75mm x 50mm	BWRL117550
75mm x 63mm	BWRL117563
90mm x 50mm	BWRL119050
90mm x 63mm	BWRL119063
90mm x 75mm	BWRL119075
110mm x 40mm	BWRL1111040
110mm x 63mm	BWRL1111063
110mm x 75mm	BWRL1111075
110mm x 90mm	BWRL1111090
125mm x 63mm	BWRL1112563
125mm x 75mm	BWRL1112575
125mm x 90mm	BWRL1112590
125mm x 110mm	BWRL11125110
140mm x 90mm	BWRL1114090
140mm x 110mm	BWRL11140110
140mm x 125mm	BWRL11140125
160mm x 90mm	BWRL1116090
160mm x 110mm	BWRL11160110
160mm x 125mm	BWRL11160125
160mm x 140mm	BWRL11160140
180mm x 110mm	BWRL11180110
180mm x 125mm	BWRL11180125
180mm x 140mm	BWRL11180140
180mm x 160mm	BWRL11180160
200mm x 110mm	BWRL11200110
200mm x 125mm	BWRL11200125
200mm x 160mm	BWRL11200160
200mm x 180mm	BWRL11200180
225mm x 110mm	BWRL11225110
225mm x 160mm	BWRL11225160
225mm x 180mm	BWRL11225180
225mm x 200mm	BWRL11225200
250mm x 160mm	BWRL11250160
250mm x 180mm	BWRL11250180
250mm x 200mm	BWRL11250200

# BUTT WELD FITTINGS AS/NZS 4129

PE100 PN10 - SDR11/17

## Reducer Long SDR11



Size	Code
250mm x 225mm	BWRL11250225
280mm x 180mm	BWRL11280180
280mm x 200mm	BWRL11280200
280mm x 225mm	BWRL11280225
280mm x 250mm	BWRL11280250
315mm x 200mm	BWRL11315200
315mm x 225mm	BWRL11315225
315mm x 250mm	BWRL11315250
315mm x 280mm	BWRL11315280

## Stub Flange Long SDR17



Size	Code
63mm	BWSFL1763
75mm	BWSFL1775
90mm	BWSFL1790
110mm	BWSFL17110
125mm	BWSFL17125
140mm	BWSFL17140
160mm	BWSFL17160
180mm	BWSFL17180
200mm	BWSFL17200
225mm	BWSFL17225
250mm	BWSFL17250
280mm	BWSFL17280
315mm	BWSFL17315
355mm	BWSFL17355
400mm	BWSFL17400
450mm	BWSFL17450
500mm	BWSFL17500
560mm	BWSFL17560
630mm	BWSFL17630

## Reducing Tee Long SDR17



Size	Code
63mm x 50mm	BWTRL176350
75mm x 50mm	BWTRL177550
75mm x 63mm	BWTRL177563
90mm x 63mm	BWTRL179063
90mm x 75mm	BWTRL179075
110mm x 63mm	BWTRL1711063
110mm x 75mm	BWTRL1711075
110mm x 90mm	BWTRL1711090
125mm x 63mm	BWTRL1712563
125mm x 90mm	BWTRL1712590
125mm x 110mm	BWTRL17125110
140mm x 90mm	BWTRL1714090
140mm x 110mm	BWTRL17140110
140mm x 125mm	BWTRL17140125
160mm x 63mm	BWTRL1716063
160mm x 75mm	BWTRL1716075
160mm x 90mm	BWTRL1716090
160mm x 110mm	BWTRL17160110

# BUTT WELD FITTINGS AS/NZS 4129

PE100 PN10 - SDR17

## Reducing Tee Long SDR17



Size	Code
160mm x 125mm	BWTRL17160125
180mm x 90mm	BWTRL1718090
180mm x 110mm	BWTRL17180110
180mm x 125mm	BWTRL17180125
180mm x 160mm	BWTRL17180160
200mm x 63mm	BWTRL1720063
200mm x 90mm	BWTRL1720090
200mm x 110mm	BWTRL17200110
200mm x 125mm	BWTRL17200125
200mm x 160mm	BWTRL17200160
225mm x 75mm	BWTRL1722575
225mm x 90mm	BWTRL1722590
225mm x 110mm	BWTRL17225110
225mm x 125mm	BWTRL17225125
225mm x 160mm	BWTRL17225160
225mm x 180mm	BWTRL17225180
250mm x 90mm	BWTRL1725090
250mm x 110mm	BWTRL17250110
250mm x 125mm	BWTRL17250125
250mm x 160mm	BWTRL17250160
250mm x 200mm	BWTRL17250200
250mm x 225mm	BWTRL17250225
280mm x 110mm	BWTRL17280110
280mm x 160mm	BWTRL17280160
280mm x 200mm	BWTRL17280200
280mm x 225mm	BWTRL17280225
280mm x 250mm	BWTRL17280250
315mm x 90mm	BWTRL1731590
315mm x 110mm	BWTRL17315110
315mm x 160mm	BWTRL17315160
315mm x 200mm	BWTRL17315200
315mm x 225mm	BWTRL17315225
315mm x 250mm	BWTRL17315250

## Tee Long SDR17



Size	Code
63mm	BWTL1763
75mm	BWTL1775
90mm	BWTL1790
110mm	BWTL17110
125mm	BWTL17125
140mm	BWTL17140
160mm	BWTL17160
180mm	BWTL17180
200mm	BWTL17200
225mm	BWTL17225
250mm	BWTL17250
280mm	BWTL17280
315mm	BWTL17315
355mm	BWTL17355
400mm	BWTL17400

# BUTT WELD FITTINGS AS/NZS 4129

PE100 PN10 - SDR17

## End Cap Long SDR17



Size	Code
63mm	BWCAPL1763
75mm	BWCAPL1775
90mm	BWCAPL1790
110mm	BWCAPL17110
125mm	BWCAPL17125
140mm	BWCAPL17140
160mm	BWCAPL17160
180mm	BWCAPL17180
200mm	BWCAPL17200
225mm	BWCAPL17225
250mm	BWCAPL17250
280mm	BWCAPL17280
315mm	BWCAPL17315
355mm	BWCAPL17355
400mm	BWCAPL17400

## 45° Elbow Long SDR17



Size	Code
63mm	BWEL174563
75mm	BWEL174575
90mm	BWEL174590
110mm	BWEL1745110
125mm	BWEL1745125
140mm	BWEL1745140
160mm	BWEL1745160
180mm	BWEL1745180
200mm	BWEL1745200
225mm	BWEL1745225
250mm	BWEL1745250
280mm	BWEL145280
315mm	BWEL1745315
355mm	BWEL1745355
400mm	BWEL1745400

## 90° Elbow Long SDR17



Size	Code
63mm	BWEL179063
75mm	BWEL179075
90mm	BWEL179090
110mm	BWEL1790110
125mm	BWEL1790125
140mm	BWEL1790140
160mm	BWEL1790160
180mm	BWEL1790180
200mm	BWEL1790200
225mm	BWEL1790225
250mm	BWEL1790250
280mm	BWEL1790280
315mm	BWEL1790315
355mm	BWEL1790355
400mm	BWEL1790400

# BUTT WELD FITTINGS AS/NZS 4129

PE100 PN10 - SDR17

## Reducer Long SDR17

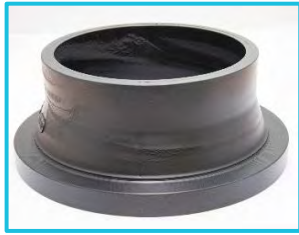


Size	Code
50mm x 32mm	BWRL175032
63mm x 32mm	BWRL176332
63mm x 40mm	BWRL176340
63mm x 50mm	BWRL176350
75mm x 63mm	BWRL117563
90mm x 63mm	BWRL179063
90mm x 75mm	BWRL179075
110mm x 63mm	BWRL1711063
110mm x 75mm	BWRL1711075
110mm x 90mm	BWRL1711090
125mm x 63mm	BWRL1712563
125mm x 75mm	BWRL1712575
125mm x 90mm	BWRL1712590
125mm x 110mm	BWRL17125110
140mm x 90mm	BWRL1714090
140mm x 110mm	BWRL17140110
140mm x 125mm	BWRL17140125
160mm x 90mm	BWRL1716090
160mm x 110mm	BWRL17160110
160mm x 125mm	BWRL17160125
160mm x 140mm	BWRL17160140
180mm x 110mm	BWRL17180110
180mm x 125mm	BWRL17180125
180mm x 140mm	BWRL17180140
180mm x 160mm	BWRL17180160
200mm x 110mm	BWRL17200110
200mm x 125mm	BWRL17200125
200mm x 160mm	BWRL17200160
200mm x 180mm	BWRL17200180
225mm x 110mm	BWRL17225110
225mm x 160mm	BWRL17225160
225mm x 180mm	BWRL17225180
225mm x 200mm	BWRL17225200
250mm x 160mm	BWRL17250160
250mm x 180mm	BWRL17250180
250mm x 200mm	BWRL17250200
250mm x 225mm	BWRL17250225
280mm x 180mm	BWRL17280180
280mm x 200mm	BWRL17280200
280mm x 225mm	BWRL17280225
280mm x 250mm	BWRL17280250
315mm x 200mm	BWRL17315200
315mm x 225mm	BWRL17315225
315mm x 250mm	BWRL17315250
315mm x 280mm	BWRL17315280

# BUTT WELD FITTINGS AS/NZS 4129

PE100 PN16 - SDR11

## Stub Flange Short SDR11



Size	Code
110mm	BWSF11110
125mm	BWSF11125
140mm	BWSF11140
160mm	BWSF11160
180mm	BWSF11180
200mm	BWSF11200
225mm	BWSF11225
250mm	BWSF11250
280mm	BWSF11280
315mm	BWSF11315
355mm	BWSF11355
400mm	BWSF11400
450mm	BWSF11450
500mm	BWSF11500
560mm	BWSF11560
630mm	BWSF11630

## End Cap Short SDR11



Size	Code
355mm	BWCAP11335
400mm	BWCAP11400
450mm	BWCAP11450
500mm	BWCAP11500
560mm	BWCAP11560

## 90° Bend Short SDR11



Size	Code
250mm	BWB1190250
280mm	BWB1190280
315mm	BWB1190315
355mm	BWB1190355
400mm	BWB1190400
450mm	BWB1190450
500mm	BWB1190500

## Reducer Short SDR11



Size	Code
90mm x 50mm	BWR119050
90mm x 63mm	BWR119063
90mm x 75mm	BWR119075
110mm x 50mm	BWR1111050
110mm x 63mm	BWR1111063
110mm x 75mm	BWR1111075
110mm x 90mm	BWR1111090
125mm x 63mm	BWR1112563
125mm x 75mm	BWR1112575
125mm x 90mm	BWR1112590
125mm x 110mm	BWR11125110
140mm x 75mm	BWR1114075
140mm x 90mm	BWR1114090
140mm x 110mm	BWR11140110
140mm x 125mm	BWR11140125

# BUTT WELD FITTINGS AS/NZS 4129

PE100 PN16 - SDR11

## Reducer Short SDR11



Size	Code
160mm x 90mm	BWR1116090
160mm x 110mm	BWR11160110
160mm x 125mm	BWR11160125
160mm x 140mm	BWR11160140
180mm x 90mm	BWR1118090
180mm x 110mm	BWR11180110
180mm x 125mm	BWR11180125
180mm x 140mm	BWR11180140
180mm x 160mm	BWR11180160
200mm x 140mm	BWR11200140
200mm x 160mm	BWR11200160
200mm x 180mm	BWR11200180
225mm x 140mm	BWR11225140
225mm x 160mm	BWR11225160
225mm x 180mm	BWR11225180
225mm x 200mm	BWR11225200
250mm x 160mm	BWR11250160
250mm x 180mm	BWR11250180
250mm x 200mm	BWR11250200
250mm x 225mm	BWR11250225
280mm x 180mm	BWR11280180
280mm x 200mm	BWR11280200
280mm x 225mm	BWR11280225
280mm x 250mm	BWR11280250
315mm x 200mm	BWR11315200
315mm x 225mm	BWR11315225
315mm x 250mm	BWR11315250
315mm x 280mm	BWR11315280
355mm x 225mm	BWR11355225
355mm x 250mm	BWR11355250
355mm x 280mm	BWR11355280
355mm x 315mm	BWR11355315
400mm x 280mm	BWR11400280
400mm x 315mm	BWR11400315
400mm x 355mm	BWR11400355
450mm x 315mm	BWR11450315
450mm x 355mm	BWR11450355
450mm x 400mm	BWR11450400
500mm x 355mm	BWR11500355
500mm x 400mm	BWR11500400
500mm x 450mm	BWR11500450
560mm x 400mm	BWR11560400
560mm x 450mm	BWR11560450
560mm x 500mm	BWR11560500
630mm x 450mm	BWR11630450
630mm x 500mm	BWR11630500
630mm x 560mm	BWR11630560

# BUTT WELD FITTINGS AS/NZS 4129

PE100 PN16 - SDR11/17

## Multi Reducer Short SDR11



Size	Code
225mm x 160mm	BWRM11225160
315mm x 225mm	BWRM11315225
450mm x 315mm	BWRM11450315
630mm x 450mm	BWRM11630450

## Stub Flange Short SDR17



Size	Code
63mm	BWSF1763
75mm	BWSF1775
90mm	BWSF1790
110mm	BWSF17110
125mm	BWSF17125
140mm	BWSF17140
160mm	BWSF17160
180mm	BWSF17180
200mm	BWSF17200
225mm	BWSF17225
250mm	BWSF17250
280mm	BWSF17280
315mm	BWSF17315
355mm	BWSF17355
400mm	BWSF17400
450mm	BWSF17450
500mm	BWSF17500
560mm	BWSF17560
630mm	BWSF17630
710mm	BWSF17710
800mm	BWSF17800
900mm	BWSF17900
1000mm	BWSF171000
1200mm	BWSF171200

## 90° Bend Short SDR17



Size	Code
110mm	BWB1790110
125mm	BWB1790125
140mm	BWB1790140
160mm	BWB1790160
180mm	BWB1790180
200mm	BWB1790200
225mm	BWB1790225
250mm	BWB1790250
280mm	BWB1790280
315mm	BWB1790315
355mm	BWB1790355
400mm	BWB1790400
450mm	BWB1790450
500mm	BWB1790500



# BUTT WELD FITTINGS AS/NZS 4129

PE100 PN16 - SDR17

## Reducer Short SDR17



Size	Code
75mm x 63mm	BWR177563
90mm x 63mm	BWR179063
90mm x 75mm	BWR179075
110mm x 63mm	BWR1711063
110mm x 75mm	BWR1711075
110mm x 90mm	BWR1711090
125mm x 63mm	BWR1712563
125mm x 75mm	BWR1712575
125mm x 90mm	BWR1712590
125mm x 110mm	BWR17125110
140mm x 75mm	BWR1714075
140mm x 90mm	BWR1714090
140mm x 110mm	BWR17140110
140mm x 125mm	BWR17140125
160mm x 90mm	BWR1716090
160mm x 110mm	BWR17160110
160mm x 125mm	BWR17160125
160mm x 140mm	BWR17160140
180mm x 90mm	BWR1718090
180mm x 110mm	BWR17180110
180mm x 125mm	BWR17180125
180mm x 140mm	BWR17180140
180mm x 160mm	BWR17180160
200mm x 140mm	BWR17200140
200mm x 160mm	BWR17200160
200mm x 180mm	BWR17200180
225mm x 140mm	BWR17225140
225mm x 160mm	BWR17225160
225mm x 180mm	BWR17225180
225mm x 200mm	BWR17225200
250mm x 160mm	BWR17250160
250mm x 180mm	BWR17250180
250mm x 200mm	BWR17250200
250mm x 225mm	BWR17250225
280mm x 200mm	BWR17280200
280mm x 225mm	BWR17280225
280mm x 250mm	BWR17280250
315mm x 200mm	BWR17315200
315mm x 225mm	BWR17315225
315mm x 250mm	BWR17315250
315mm x 280mm	BWR17315280

# BUTT WELD FITTINGS AS/NZS 4129

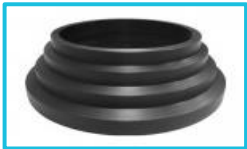
PE100 PN16 - SDR17

## Reducer Short SDR17



Size	Code
355mm x 225mm	BWR17355225
355mm x 250mm	BWR17355250
355mm x 280mm	BWR17355280
355mm x 315mm	BWR17355315
400mm x 280mm	BWR17400280
400mm x 315mm	BWR17400315
400mm x 355mm	BWR17400355
450mm x 315mm	BWR17450315
450mm x 355mm	BWR17450355
450mm x 400mm	BWR17450400
500mm x 355mm	BWR17500335
500mm x 400mm	BWR17500400
500mm x 450mm	BWR17500450
560mm x 400mm	BWR17560400
560mm x 450mm	BWR17560450
560mm x 500mm	BWR17560500
630mm x 450mm	BWR17630450
630mm x 500mm	BWR175630500
630mm x 560mm	BWR17630560

## Multi Reducer Short SDR17



Size	Code
225mm x 160mm	BWRM17225160
315mm x 225mm	BWRM17315225
450mm x 315mm	BWRM17450315
630mm x 450mm	BWRM17630450
900mm x 630mm	BWRM17900630

# ELECTROFUSION EQUIPMENT

Machines Available For Purchase and Hire

## Fusamatic Qbox



### High Quality Electrofusion Control Unit

#### Features

- \* Friendly user interface with helpful on-screen prompts
- \* Remaining joint record memory capacity
- \* Time until next service
- \* Input supply voltage
- \* Time and date

Joint record data is stored in internal memory and is automatically backed up to a removable SD card  
USB memory stick output for the transfer of data to PC

Count-up timer at the end of jointing allows the cooling time to be monitored

Robust construction employing high quality die-cast aluminium enclosure and integrated heat-sink  
IP54 rated to EN60529 preventing ingress of water and dirt

## Fusamatic Sbox Lite



### Lightweight Universal Electrofusion Machine

#### Features

- \* Suitable for welding electrofusion fittings from 20mm - 125mm
- \* Barcode scanner included
- \* Data joint memory of 350 welds - downloadable to a USB memory stick
- \* Manual scraper included
- \* Transport Bag

The Sbox Lite is a lightweight universal electrofusion machine capable of welding any brand of electrofusion fittings for gas, water and other pressure pipe applications

## Universal Scraper



### The Universal Scraper Kit 63mm - 250mm

#### Features

- \* Correct length of scrape is pre-set
- \* Fixed, serrated blade driven around the pipe by a splined shaft
- \* Ratchet action
- \* Internal roller action holds the blade against the pipe
- \* The adjustment knob caters for the variation in wall thickness and pressure ratings

Includes Carry case, spare blade, ratchet wrench, allen key & cleaning brush

The Universal Scraper provides a convenient means of preparing pipe ends prior to electrofusion jointing. It can operate on all pipe diameters and commonly used SDR sizes from 63mm to 250mm inclusive and can be used on coiled pipe.