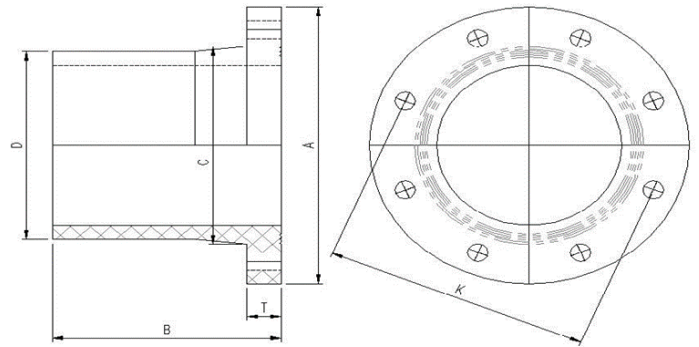
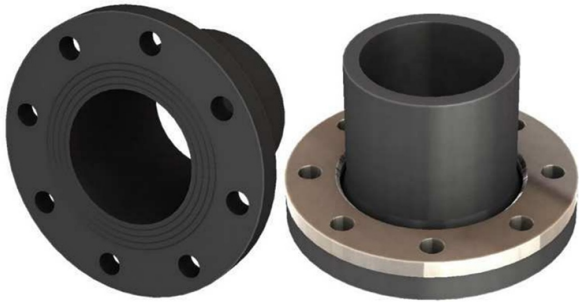


## TECHNICAL DATA | MAXI STUB WITH SS BACKING RING

Standards:	AS/NZS 4129   SDR11
Size Range:	DN 90 - DN 630
Materials:	Stub Flanges: Polyethylene (PE) 100 Backing Rings: Stainless Steel 316
Pressure Rating:	PN16
Spigot Options:	Short Spigot - Suitable for Butt Welding Only Long Spigot - Suitable for Butt Welding and Electrofusion Welding
Backing Rings:	Refer to PIPA guideline <a href="#">POP007</a> Metal Backing Flanges for PE, for backing ring details and flange joint installation



Pipe Size mm	Drilling Size inch	K mm	T mm	Bolt mm	A mm	B mm	C mm	Code
90	3"	146	20	M16	180	112	104	BWMSD903
90	3" / 4"	146 / 178	20	M16	220	118	100	BWMSD9034
110	4"	178	20	M16	215	127	178	BWMSD1104
125	4"	178	20	M16	215	134	132	BWMSD1254
160	6"	235	25	M16	280	183	180	BWMSD1606
180	6"	235	25	M16	280	183	180	BWMSD1806
250	8"	292	35	M16	335	197	250	BWMSD2508
280	9"	324	35	M16	370	215	292	BWMSD2809
315	10"	356	40	M20	405	230	315	BWMSD31510
355	12"	406	45	M20	455	241	357	BWMSD35512
400	15"	495	50	M24	557	264	402	BWMSD40015

The drawings, materials and specifications outlined are subject to change without notice due to the continuous improvements and development of our product range.

**FUSION QLD PTY LTD**

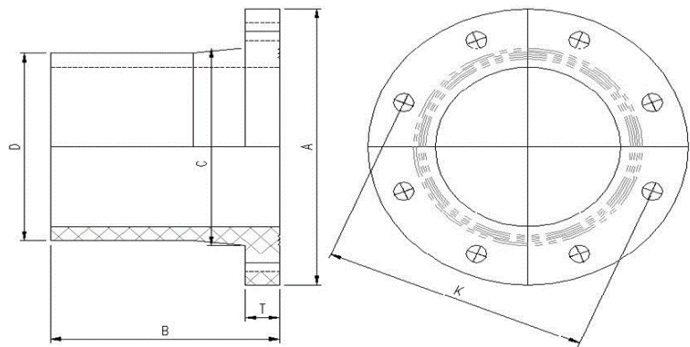
ABN: 42 987 067 369  
13 Vision Court, Noosaville, QLD, 4566  
42-44 South Link, Dandenong, VIC, 3175

**CONTACT**

T: +61 7 5474 3000 (Qld)  
T: +61 3 9037 4755 (Vic)  
E: sales@fusionqld.com.au  
W: fusionqld.com.au

## TECHNICAL DATA | MAXI STUB WITH SS BACKING RING

Standards:	AS/NZS 4129   SDR11
Size Range:	DN 90 - DN 630
Materials:	Stub Flanges: Polyethylene (PE) 100 Backing Rings: Stainless Steel 316
Pressure Rating:	PN16
Spigot Options:	Short Spigot - Suitable for Butt Welding Only Long Spigot - Suitable for Butt Welding and Electrofusion Welding
Backing Rings:	Refer to PIPA guideline <a href="#">POP007</a> Metal Backing Flanges for PE, for backing ring details and flange joint installation



Pipe Size mm	Drilling Size inch	K mm	T mm	Bolt mm	A mm	B mm	C mm	Code
450	15"	495	55	M24	580	285	450	BWMSD45015
500	18"	584	60	M24	705	354	504	BWMSD50018
560	20"	641	65	M24	735	430	560	BWMSD56020
630	22"	699	70	M28	760	430	640	BWMSD63022
630	24"	756	80	M28	815	430	643	BWMSD63024

**Note:**

Installation should always be performed by a licensed operator. It is the responsibility of the installer to check that both the pipe(s) and fitting(s) that are installed are compatible, only compatible materials should be joined together. It is the responsibility of the licensed installer to check the PN and SDR ratings marked on the fitting(s) and ensure that the pipe is compatible. Correct installation procedures should always be followed.

The drawings, materials and specifications outlined are subject to change without notice due to the continuous improvements and development of our product range.

**FUSION QLD PTY LTD**

ABN: 42 987 067 369  
13 Vision Court, Noosaville, QLD, 4566  
42-44 South Link, Dandenong, VIC, 3175

**CONTACT**

T: +61 7 5474 3000 (Qld)  
T: +61 3 9037 4755 (Vic)  
E: [sales@fusionqld.com.au](mailto:sales@fusionqld.com.au)  
W: [fusionqld.com.au](http://fusionqld.com.au)