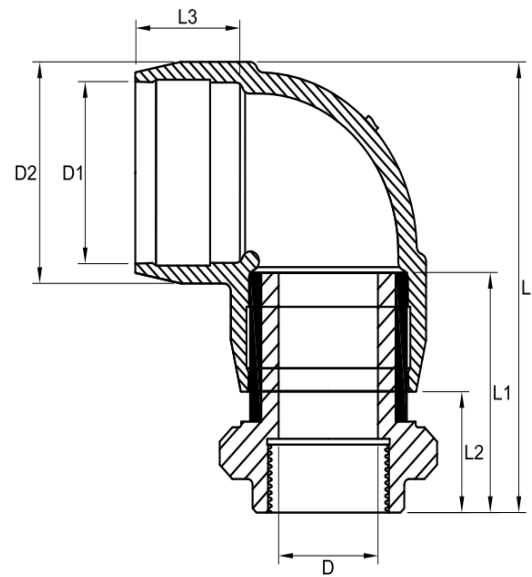


TECHNICAL DATA | 90° TRANSITION ELBOW FEMALE

- Standards: AS/NZS 4129 | MS58
 Size Range: 25mm x 3/4" - 63mm x 2"
 Materials:
 - Polyethylene (PE) 100
 - Coated CW617N Brass
 Pressure Rating: PN16, Water | PN10, Gas
 Fitting Details: Female BSP Thread



D1 mm	D inch	L mm	L1 mm	L2 mm	L3 mm	D2 mm	Fusion Time Secs	Cooling Time mins	Weight kg	Code
25	3/4"	123	91	47	44	35	30	3	0.31	EFTEF902534
32	1"	144	100	60	40	44	60	5	0.30	EFTEF90321
40	1 1/4"	158	109	67	42	52	50	5	0.52	EFTEF9040114
50	1 1/2"	182	124	79	45	63	90	5	0.65	EFTEF9050112
63	2"	214	141	91	50	81	35	5	0.95	EFTEF90632

Note:

Installation should always be performed by a licensed operator. It is the responsibility of the installer to check that both the pipe(s) and fitting(s) that are installed are compatible, only compatible materials should be joined together. It is the responsibility of the licensed installer to check the PN and SDR ratings marked on the fitting(s) and ensure that the pipe is compatible. Correct installation procedures should always be followed.

The drawings, materials and specifications outlined are subject to change without notice due to the continuous improvements and development of our product range.

FUSION QLD PTY LTD

ABN: 42 987 067 369
 13 Vision Court, Noosaville, QLD, 4566
 42-44 South Link, Dandenong, VIC, 3175

CONTACT

T: +61 7 5474 3000 (Qld)
 T: +61 3 9037 4755 (Vic)
 E: sales@fusionqld.com.au
 W: fusionqld.com.au