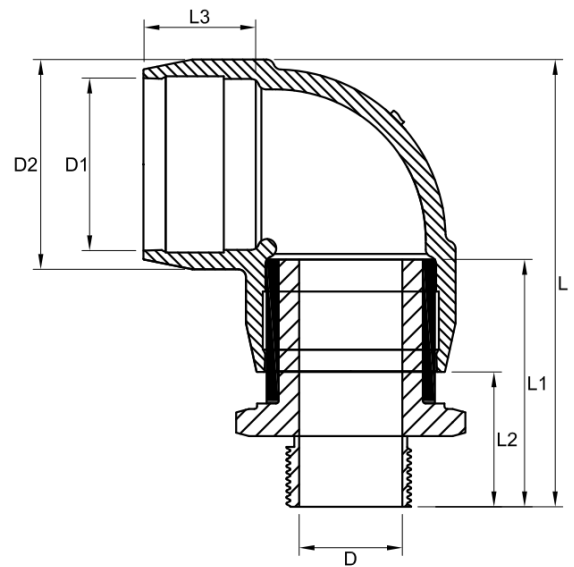


## TECHNICAL DATA | 90° TRANSITION ELBOW MALE

- Standards: AS/NZS 4129 | MS58  
 Size Range: 20mm x 1/2" - 63mm x 2"  
 Materials:
  - Polyethylene (PE) 100
  - Coated CW617N Brass
 Pressure Rating: PN16, Water | PN10, Gas  
 Fitting Details: Male BSP Thread



D1 mm	D inch	L mm	L1 mm	L2 mm	L3 mm	D2 mm	Fusion Time Secs	Cooling Time mins	Weight kg	Code
25	3/4"	131	99	55	44	35	30	3	0.19	EFTEM902534
32	1"	154	110	70	40	44	60	5	0.28	EFTEM90321
40	1 1/4"	170	121	79	42	52	50	5	0.40	EFTEM9040114
50	1 1/2"	192	124	79.5	44.5	63	90	5	0.54	EFTEM9050112
63	2"	223	150	100	50	81	35	5	0.87	EFTEM90632

**Note:**

Installation should always be performed by a licensed operator. It is the responsibility of the installer to check that both the pipe(s) and fitting(s) that are installed are compatible, only compatible materials should be joined together. It is the responsibility of the licensed installer to check the PN and SDR ratings marked on the fitting(s) and ensure that the pipe is compatible. Correct installation procedures should always be followed.

The drawings, materials and specifications outlined are subject to change without notice due to the continuous improvements and development of our product range.

**FUSION QLD PTY LTD**

ABN: 42 987 067 369  
 13 Vision Court, Noosaville, QLD, 4566  
 42-44 South Link, Dandenong, VIC, 3175

**CONTACT**

T: +61 7 5474 3000 (Qld)  
 T: +61 3 9037 4755 (Vic)  
 E: sales@fusionqld.com.au  
 W: fusionqld.com.au