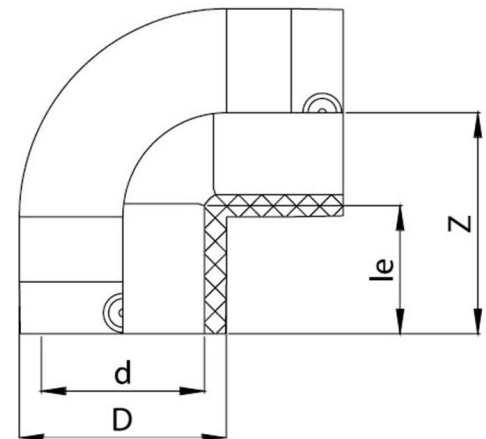


TECHNICAL DATA | EF ELBOW 90°

| | |
|------------------|--------------------------------------------------------------------------------------------|
| Standards: | AS/NZS 4129 SDR11 SDR17 |
| Size Range: | 20 mm - 180 mm |
| Materials: | Polyethelyne (PE) 100 |
| Pressure Rating: | PN16, Water PN10, Gas |
| Fitting Details: | <ul style="list-style-type: none"> • Injected • 4mm pin connectors |



| d mm | D mm | Z mm | le mm | Weight kg | Compatibilty SDR | Code |
|------|------|------|-------|-----------|------------------|----------|
| 20 | 43 | 63 | 40 | 0.160 | 9, 11 | EFE9020 |
| 25 | 35 | 60 | 41 | 0.070 | 9, 11 | EFE9025 |
| 32 | 44 | 62 | 40 | 0.100 | 9, 11 | EFE9032 |
| 40 | 52 | 65 | 42 | 0.125 | 9, 11 | EFE9040 |
| 50 | 63 | 72 | 45 | 0.175 | 9, 11 | EFE9050 |
| 63 | 81 | 84 | 50 | 0.315 | 9, 11 | EFE9063 |
| 75 | 95 | 92 | 53 | 0.440 | 9, 17 | EFE9075 |
| 90 | 113 | 109 | 60 | 0.685 | 9, 17 | EFE9090 |
| 110 | 137 | 135 | 73 | 1.185 | 9, 17 | EFE90110 |
| 125 | 154 | 152 | 78 | 1.655 | 9, 17 | EFE90125 |
| 160 | 201 | 205 | 87 | 4.320 | 9, 17 | EFE90160 |
| 180 | 222 | 197 | 90 | 4.770 | 9, 17 | EFE90180 |



Note:

Installation should always be performed by a licensed operator. It is the responsibility of the installer to check that both the pipe(s) and fitting(s) that are installed are compatible, only compatible materials should be joined together. It is the responsibility of the licensed installer to check the PN and SDR ratings marked on the fitting(s) and ensure that the pipe is compatible. Correct installation procedures should always be followed.

The drawings, materials and specifications outlined are subject to change without notice due to the continuous improvements and development of our product range.

FUSION QLD PTY LTD

ABN: 42 987 067 369
13 Vision Court, Noosaville, QLD, 4566
42-44 South Link, Dandenong, VIC, 3175

CONTACT

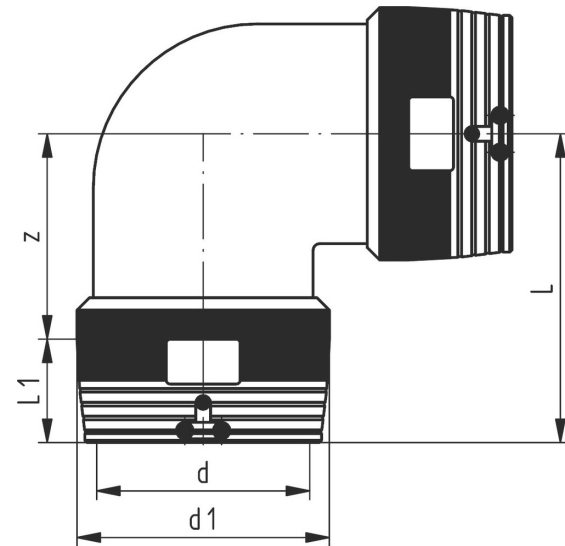
T: +61 7 5474 3000 (Qld)
T: +61 3 9037 4755 (Vic)
E: sales@fusionqld.com.au
W: fusionqld.com.au

TECHNICAL DATA | EF ELBOW 90°

- Standards: AS/NZS 4129 | SDR11 | ISO S5
 Size Range: 200 mm - 250 mm
 Materials: Polyethelyne (PE) 100
 Pressure Rating: PN16, Water | PN10, Gas
- Fitting Details:
- 4 mm pin connectors
 - Limited path fusion indicators
 - Two separate fusion zones



| d mm | d1 mm | L mm | L1 mm | z mm | Weight kg | Code |
|------------|-------|------|-------|------|-----------|----------|
| 200 | 250 | 298 | 104 | 194 | 9.32 | EFE90200 |
| 225 | 280 | 318 | 112 | 206 | 13.22 | EFE90225 |
| 250 | 310 | 347 | 123 | 224 | 16.6 | EFE90250 |



Note:

Installation should always be performed by a licensed operator. It is the responsibility of the installer to check that both the pipe(s) and fitting(s) that are installed are compatible, only compatible materials should be joined together. It is the responsibility of the licensed installer to check the PN and SDR ratings marked on the fitting(s) and ensure that the pipe is compatible. Correct installation procedures should always be followed.

The drawings, materials and specifications outlined are subject to change without notice due to the continuous improvements and development of our product range.

FUSION QLD PTY LTD

ABN: 42 987 067 369
 13 Vision Court, Noosaville, QLD, 4566
 42-44 South Link, Dandenong, VIC, 3175

CONTACT

T: +61 7 5474 3000 (Qld)
 T: +61 3 9037 4755 (Vic)
 E: sales@fusionqld.com.au
 W: fusionqld.com.au