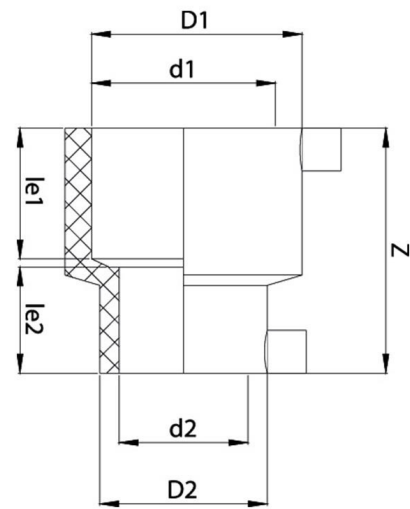


TECHNICAL DATA | EF REDUCER

- Standards: AS/NZS 4129 | SDR11 | SDR17
 Size Range: 25 x 20 mm - 180 x 125 mm
 Materials: Polyethylene (PE) 100
 Pressure Rating: PN16, Water | PN10, Gas
 Fitting Details:
 - Injected
 - 4mm pin connectors



d1 mm	d2 mm	D1 mm	D2 mm	Z mm	le1 mm	le2 mm	Weight kg	Compatibility SDR	Code
25	20	34	29	77	38	36	0.046	9, 11	EFR2520
32	20	43	29	77	39	37	0.057	9, 11	EFR3220
32	25	43	34	77	39	37	0.062	9, 11	EFR3225
40	32	52	44	91	46	43	0.085	9, 11	EFR4032
50	32	62	44	91	46	41	0.095	9, 11	EFR5032
50	40	62	52	91	46	43	0.105	9, 11	EFR5040
63	32	78	44	102	52	44	0.140	9, 11	EFR6332
63	40	78	52	102	52	45	0.145	9, 11	EFR6340
63	50	78	62	102	52	48	0.150	9, 11	EFR6350
75	63	98	82	126	61	57	0.330	9, 11	EFR7563
90	63	110	79	123	61	55	0.315	9, 11	EFR9063
110	63	135	80	158	71	53	0.575	9, 11	EFR11063
110	90	134	112	137	68	62	0.560	9, 17	EFR11090
125	90	152	112	145	75	62	0.735	9, 17	EFR12590
160	90	187	116	175	92	67	1.570	9, 17	EFR16090
160	110	200	140	184	89	73	1.675	9, 17	EFR160110
180	125	216	157	221	115	90	2.170	9, 17	EFR180125



Note:

Installation should always be performed by a licensed operator. It is the responsibility of the installer to check that both the pipe(s) and fitting(s) that are installed are compatible, only compatible materials should be joined together. It is the responsibility of the licensed installer to check the PN and SDR ratings marked on the fitting(s) and ensure that the pipe is compatible. Correct installation procedures should always be followed.

The drawings, materials and specifications outlined are subject to change without notice due to the continuous improvements and development of our product range.

FUSION QLD PTY LTD

ABN: 42 987 067 369
 13 Vision Court, Noosaville, QLD, 4566
 42-44 South Link, Dandenong, VIC, 3175

CONTACT

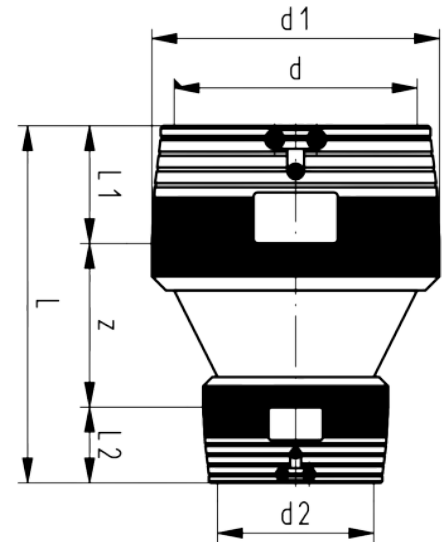
T: +61 7 5474 3000 (Qld)
 T: +61 3 9037 4755 (Vic)
 E: sales@fusionqld.com.au
 W: fusionqld.com.au

TECHNICAL DATA | EF REDUCER

- Standards: AS/NZS 4129 | SDR11 | SDR17
 Size Range: 200 x 160 mm - 250 x 225 mm
 Materials: Polyethelyne (PE) 100
 Pressure Rating: PN16, Water | PN10, Gas
- Fitting Details:
- 4mm pin connectors
 - Limited path fusion indicators
 - 2 separate fusion zones



d mm	d2 mm	d1 mm	L mm	L1 mm	L2 mm	z mm	Weight kg	Code
200	160	250	365	104	90	171	5.098	EFR200160
225	160	280	385	112	90	183	6.00	EFR225160
225	200	280	400	112	104	184	8.20	EFR225200
250	160	310	400	123	90	187	7.860	EFR250160
250	200	310	417	123	104	200	8.480	EFR250200
250	225	310	430	123	112	204	8.450	EFR250225



Note:

Installation should always be performed by a licensed operator. It is the responsibility of the installer to check that both the pipe(s) and fitting(s) that are installed are compatible, only compatible materials should be joined together. It is the responsibility of the licensed installer to check the PN and SDR ratings marked on the fitting(s) and ensure that the pipe is compatible. Correct installation procedures should always be followed.

The drawings, materials and specifications outlined are subject to change without notice due to the continuous improvements and development of our product range.

FUSION QLD PTY LTD

ABN: 42 987 067 369
 13 Vision Court, Noosaville, QLD, 4566
 42-44 South Link, Dandenong, VIC, 3175

CONTACT

T: +61 7 5474 3000 (Qld)
 T: +61 3 9037 4755 (Vic)
 E: sales@fusionqld.com.au
 W: fusionqld.com.au