

TECHNICAL DATA | EF TEE

Standards: AS/NZS 4129 | SDR11 | SDR17

Size Range: 20 mm - 250 mm

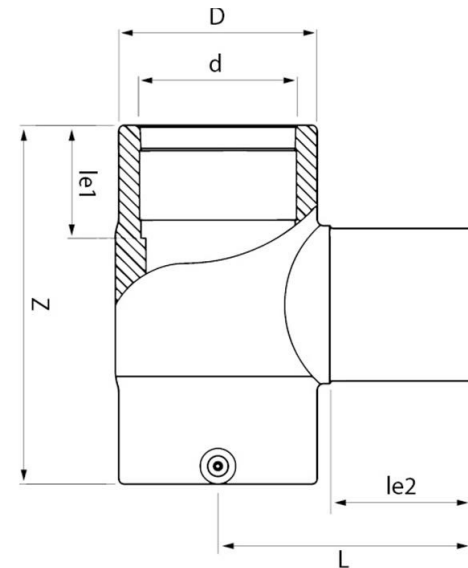
Materials: Polyethylene (PE) 100

Pressure Rating: PN16, Water | PN10, Gas

- Fitting Details:
- Injected
 - 4mm pin connectors



d mm	D mm	Z mm	L mm	le1 mm	le2 mm	Weight kg	Compatibility SDR	Code
20	44	98	90	35	65	0.075	9, 11	EFT20
25	44	98	90	35	65	0.140	9, 11	ETF25
32	44	98	90	35	65	0.110	9, 11	EFT32
40	52	131	91	44	59	0.185	9, 11	EFT40
50	64	138	96	43	55	0.230	9, 11	EFT50
63	80	164	113	49	63	0.380	9, 11	EFT63
75	95	189	129	55	70	0.605	9, 17	EFT75
90	117	210	148	65	79	1.005	9, 17	EFT90
110	138	260	169	72	82	1.730	9, 17	EFT110
125	158	268	180	77	87	2.400	9, 17	EFT125
160	204	320	210	86	98	4.015	9, 17	EFT160
180	228	340	230	88	105	5.810	9, 17	EFT180



Note:

Installation should always be performed by a licensed operator. It is the responsibility of the installer to check that both the pipe(s) and fitting(s) that are installed are compatible, only compatible materials should be joined together. It is the responsibility of the licensed installer to check the PN and SDR ratings marked on the fitting(s) and ensure that the pipe is compatible. Correct installation procedures should always be followed.

The drawings, materials and specifications outlined are subject to change without notice due to the continuous improvements and development of our product range.

FUSION QLD PTY LTD

ABN: 42 987 067 369
13 Vision Court, Noosaville, QLD, 4566
42-44 South Link, Dandenong, VIC, 3175

CONTACT

T: +61 7 5474 3000 (Qld)
T: +61 3 9037 4755 (Vic)
E: sales@fusionqld.com.au
W: fusionqld.com.au

TECHNICAL DATA | EF TEE

Standards: AS/NZS 4129 | SDR11 | ISO 55

Size Range: 200 mm - 250 mm

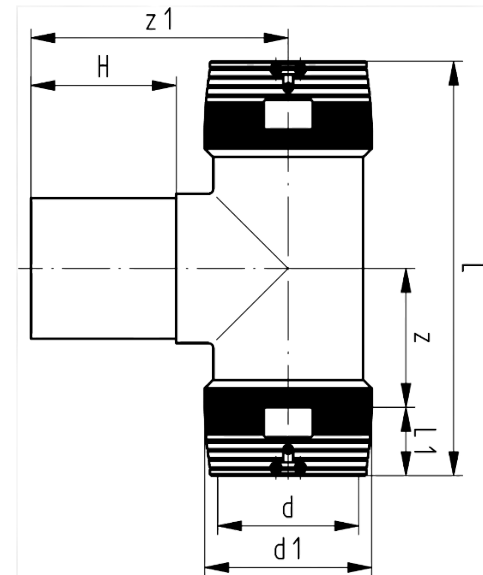
Materials: Polyethelyne (PE) 100

Pressure Rating: PN16, Water | PN10, Gas

- Fitting Details:
- 4mm pin connectors
 - Limited path fusion indicators
 - 2 separate fusion zones



d mm	d1 mm	L mm	L1 mm	z mm	z1 mm	H mm	Weight kg	Code
200	250	590	104	191	250	117	10.800	EFT200
225	280	636	112	206	270	122	15.900	EFT225
250	310	685	123	220	288	127	18.900	EFT250



Note:

Installation should always be performed by a licensed operator. It is the responsibility of the installer to check that both the pipe(s) and fitting(s) that are installed are compatible, only compatible materials should be joined together. It is the responsibility of the licensed installer to check the PN and SDR ratings marked on the fitting(s) and ensure that the pipe is compatible. Correct installation procedures should always be followed.

The drawings, materials and specifications outlined are subject to change without notice due to the continuous improvements and development of our product range.

FUSION QLD PTY LTD

ABN: 42 987 067 369
13 Vision Court, Noosaville, QLD, 4566
42-44 South Link, Dandenong, VIC, 3175

CONTACT

T: +61 7 5474 3000 (Qld)
T: +61 3 9037 4755 (Vic)
E: sales@fusionqld.com.au
W: fusionqld.com.au