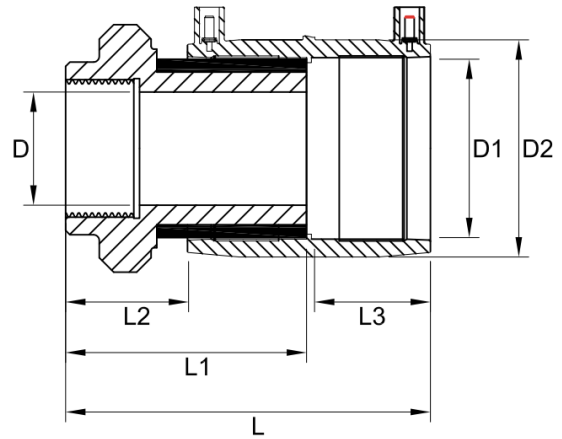


TECHNICAL DATA | TRANSITION COUPLER FEMALE

- Standards: AS/NZS 4129 | MS58
 Size Range: 25mm x 3/4" - 63mm x 2"
 Materials:
 - Polyethylene (PE) 100
 - Coated CW617N Brass
 Pressure Rating: PN16, Water | PN10, Gas
 Fitting Details: Female BSP Thread



D1 mm	D inch	L mm	L1 mm	L2 mm	L3 mm	D2 mm	Fusion Time Secs	Cooling Time mins	Weight kg	Code
25	3/4"	130.5	91	53.5	37.5	33.5	30	3	0.18	EFTCF2534
32	3/4"	131	91	54	37	34	30	3	0.21	EFTCM3234
32	1"	139.5	100	62.5	38	43	45	3	0.25	EFTCM321
40	1"	148	100	57	43	44	50	5	0.28	EFTCM401
40	1 1/4"	155	109	65	44	51.5	40	5	0.39	EFTCM40114
40	1 1/2"	172	124	81	43	52	60	5	0.53	EFTCM40112
50	1 1/4"	157	109	66	43	44	60	5	0.38	EFTCM50114
50	1 1/2"	171	124	80	44	61.5	90	5	0.50	EFTCM50112
50	2"	195	141	93	48	62	120	10	0.78	EFTCM502
63	1"	150	100	48	52	78	90	5	0.50	EFTCM63114
63	1 1/2"	178	124	76	48	78	120	10	0.55	EFTCM63112
63	2"	194	141	92	49	78	35	3	0.78	EFTCM632

Note:

Installation should always be performed by a licensed operator. It is the responsibility of the installer to check that both the pipe(s) and fitting(s) that are installed are compatible, only compatible materials should be joined together. It is the responsibility of the licensed installer to check the PN and SDR ratings marked on the fitting(s) and ensure that the pipe is compatible. Correct installation procedures should always be followed.

The drawings, materials and specifications outlined are subject to change without notice due to the continuous improvements and development of our product range.

FUSION QLD PTY LTD

ABN: 42 987 067 369
 13 Vision Court, Noosaville, QLD, 4566
 42-44 South Link, Dandenong, VIC, 3175

CONTACT

T: +61 7 5474 3000 (Qld)
 T: +61 3 9037 4755 (Vic)
 E: sales@fusionqld.com.au
 W: fusionqld.com.au