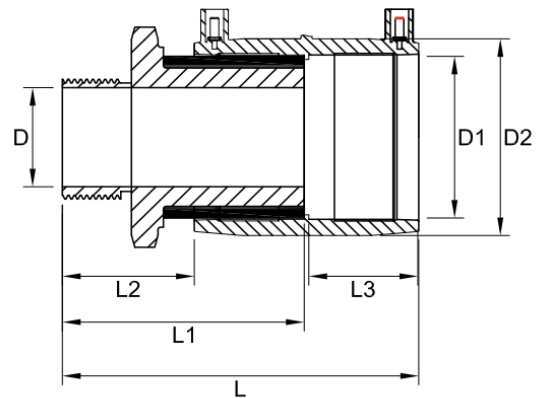


## TECHNICAL DATA | TRANSITION COUPLER MALE

- Standards: AS/NZS 4129 | MS58  
 Size Range: 25mm x 3/4" - 63mm x 2"  
 Materials:
  - Polyethylene (PE) 100
  - Coated CW617N Brass
 Pressure Rating: PN16, Water | PN10, Gas  
 Fitting Details: Male BSP Thread



D1 mm	D inch	L mm	L1 mm	L2 mm	L3 mm	D2 mm	Fusion Time Secs	Cooling Time mins	Weight kg	Code
25	3/4"	138.5	99	61.5	37.5	33.5	30	3	0.159	EFTCM2534
32	1/2"	170	100	62.5	37.5	43	45	3	0.38	EFTCM3212
32	3/4"	138.5	99	61.5	37	34	30	3	0.18	EFTCM3234
32	1"	149.5	110	72.5	38	43	45	3	0.24	EFTCM321
32	1 1/4"	166	121	75	43	44	50	5	0.35	EFTCM32114
32	1 1/2"	165.5	134	74.5	41	44	60	5	0.45	EFTCM32112
40	1	155	110	64	43	44	50	5	0.255	EFTCM401
40	1 1/4"	167	121	77	44	51.5	40	5	0.36	EFTCM40114
40	1 1/2"	179	134	88	43	52	60	5	0.45	EFTCM40112
50	1	160	110	69	41	44	60	5	0.28	EFTCM501
50	1 1/4"	158	121	67	43	44	60	5	0.37	EFTCM50114
50	1 1/2"	181	134	90	44	61.5	90	5	0.47	EFTCM50112
50	2"	200	150	98	48	62	120	10	0.71	EFTCM502
63	1 1/4"	171	121	69	45	78	70	5	0.42	EFTCM63114
63	1 1/2"	184	134	82	48	78	120	10	0.50	EFTCM63112
63	2"	203	150	101	49	78	35	3	0.71	EFTCM632

**Note:**

Installation should always be performed by a licensed operator. It is the responsibility of the installer to check that both the pipe(s) and fitting(s) that are installed are compatible, only compatible materials should be joined together. It is the responsibility of the licensed installer to check the PN and SDR ratings marked on the fitting(s) and ensure that the pipe is compatible. Correct installation procedures should always be followed.

The drawings, materials and specifications outlined are subject to change without notice due to the continuous improvements and development of our product range.

**FUSION QLD PTY LTD**

ABN: 42 987 067 369  
 13 Vision Court, Noosaville, QLD, 4566  
 42-44 South Link, Dandenong, VIC, 3175

**CONTACT**

T: +61 7 5474 3000 (Qld)  
 T: +61 3 9037 4755 (Vic)  
 E: sales@fusionqld.com.au  
 W: fusionqld.com.au