

ELECTROFUSION FITTINGS TECHNICAL DATA

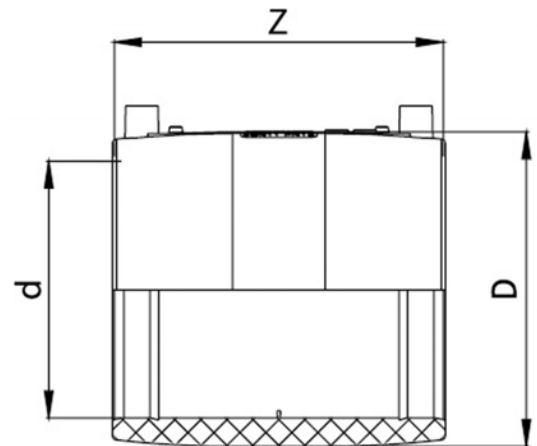


TECHNICAL DATA | EF COUPLER SDR11 - SDR17

- Standards: AS/NZS 4129 | SDR19 | SDR11 | SDR13.6 | SDR17
- Size Range: 20 mm - 1200 mm
- Materials: Polyethelyne (PE) 100
- Pressure Rating: PN16, Water | PN10, Gas
- Fitting Details:
- Injected (up to 400mm)
 - 4mm pin connectors
 - Removable centre stopper (up to 400mm)



d mm	D mm	Z mm	Weight kg	Compatibility SDR	Code
20	32	75	0.042	9, 11	EFC20
25	37	80	0.045	9, 11	EFC25
32	44	85	0.065	9, 11	EFC32
40	55	90	0.090	9, 11	EFC40
50	62	91	0.150	9, 11	EFC50
63	80	98	0.220	9, 11	EFC63
75	94	110	0.255	9, 11, 17	EFC75
90	115	124	0.380	9, 11, 17	EFC90
110	137	144	0.640	9, 11, 17	EFC110
125	155	154	0.759	9, 11, 17	EFC125
140	172	162	0.985	9, 11, 17	EFC140
160	196	172	1.360	9, 11, 17	EFC160
180	219	184	1.900	9, 11, 17	EFC180
200	241	198	2.425	9, 11, 17	EFC200
225	272	212	3.175	9, 11, 17	EFC225
250	303	228	4.440	9, 11, 17	EFC250
280	338	244	6.110	9, 11, 17	EFC280
315	385	264	8.750	9, 11, 17	EFC315
355	433	280	10.385	9, 11, 17	EFC355
400	488	300	13.980	9, 11, 17	EFC40011
450	560	320	20.600	9, 11, 17	EFC45011
500	621	360	28.450	11, 13.6	EFC50011



The drawings, materials and specifications outlined are subject to change without notice due to the continuous improvements and development of our product range.

FUSION QLD PTY LTD

ABN: 42 987 067 369
13 Vision Court, Noosaville, QLD, 4566
42-44 South Link, Dandenong, VIC, 3175

CONTACT

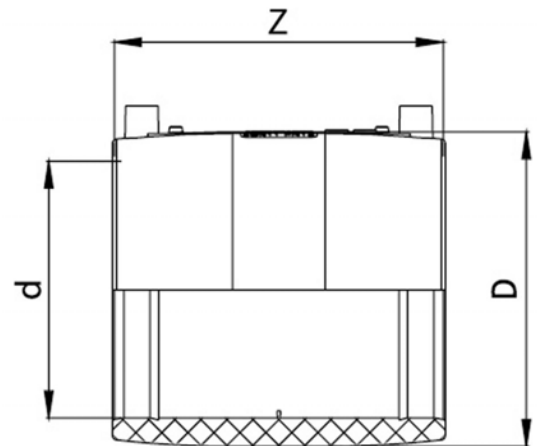
T: +61 7 5474 3000 (Qld)
T: +61 3 9037 4755 (Vic)
E: sales@fusionqld.com.au
W: fusionqld.com.au

TECHNICAL DATA | EF COUPLER SDR11 - SDR17

- Standards: AS/NZS 4129 | SDR19 | SDR11 | SDR13.6 | SDR17
- Size Range: 20 mm - 1200 mm
- Materials: Polyethelyne (PE) 100
- Pressure Rating: PN16, Water | PN10, Gas
- Fitting Details:
 - Injected (up to 400mm)
 - 4mm pin connectors
 - Removable centre stopper (up to 400mm)



d mm	D mm	Z mm	Weight kg	Compatibility SDR	Code
560	695	390	39.500	11, 13.6	EFC56011
630	780	430	53.000	11, 13.6	EFC63011
710	882	475	71.200	11, 13.6	EFC71011
800	993	520	101.200	11, 13.6	EFC80011
900	1115	550	137.700	11, 13.6	EFC90011
1000	1238	600	187.700	11, 13.6	EFC100011
1200	1483	650	294.500	11, 13.6	EFC120011



Note:

Installation should always be performed by a licensed operator. It is the responsibility of the installer to check that both the pipe(s) and fitting(s) that are installed are compatible, only compatible materials should be joined together. It is the responsibility of the licensed installer to check the PN and SDR ratings marked on the fitting(s) and ensure that the pipe is compatible. Correct installation procedures should always be followed.

The drawings, materials and specifications outlined are subject to change without notice due to the continuous improvements and development of our product range.

FUSION QLD PTY LTD

ABN: 42 987 067 369
13 Vision Court, Noosaville, QLD, 4566
42-44 South Link, Dandenong, VIC, 3175

CONTACT

T: +61 7 5474 3000 (Qld)
T: +61 3 9037 4755 (Vic)
E: sales@fusionqld.com.au
W: fusionqld.com.au

TECHNICAL DATA | EF COUPLER SDR17 - SDR26

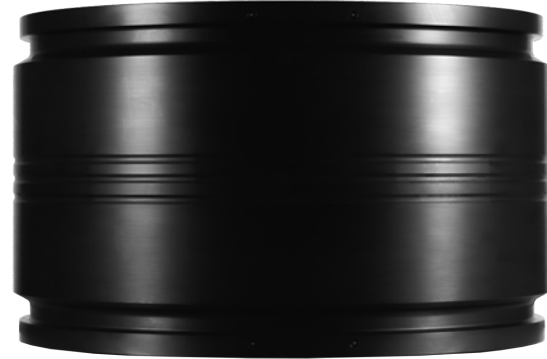
Standards: AS/NZS 4129 | SDR17

Size Range: 450 mm - 1200 mm

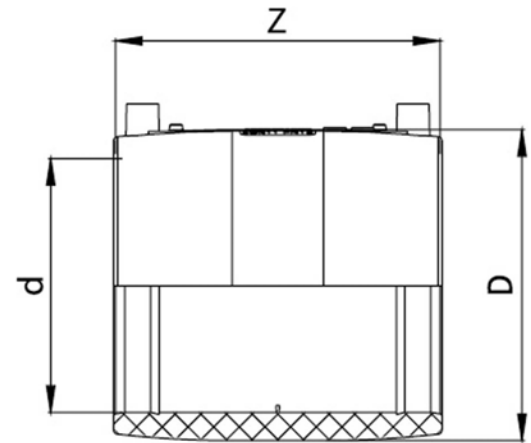
Materials: Polyethelyne (PE) 100

Pressure Rating: PN10, Water | PN5, Gas

Fitting Details: 4mm pin connectors



d mm	D mm	Z mm	Weight kg	Compatibility SDR	Code
450	520	320	14.680	17, 26	EFC45017
500	577	360	19.700	17, 26	EFC50017
560	645	390	27.200	17, 26	EFC56017
630	724	430	37.000	17, 26	EFC63017
710	819	475	49.370	17, 26	EFC71017
800	921	520	69.180	17, 26	EFC80017
900	1035	550	93.150	17, 26	EFC90017
1000	1149	600	125.650	17, 26	EFC100017
1200	1376	650	196.450	17, 26	EFC120017



Note:

Installation should always be performed by a licensed operator. It is the responsibility of the installer to check that both the pipe(s) and fitting(s) that are installed are compatible, only compatible materials should be joined together. It is the responsibility of the licensed installer to check the PN and SDR ratings marked on the fitting(s) and ensure that the pipe is compatible. Correct installation procedures should always be followed.

The drawings, materials and specifications outlined are subject to change without notice due to the continuous improvements and development of our product range.

FUSION QLD PTY LTD

ABN: 42 987 067 369
13 Vision Court, Noosaville, QLD, 4566
42-44 South Link, Dandenong, VIC, 3175

CONTACT

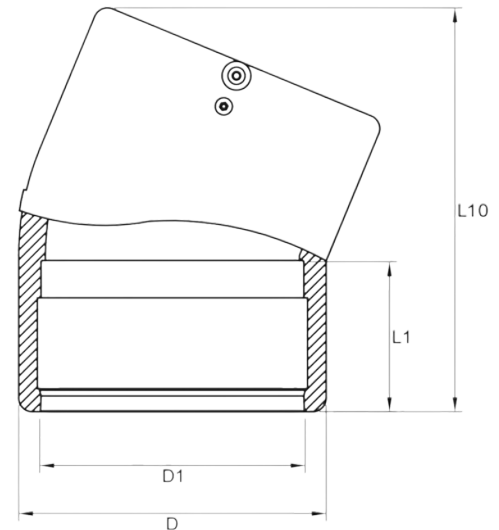
T: +61 7 5474 3000 (Qld)
T: +61 3 9037 4755 (Vic)
E: sales@fusionqld.com.au
W: fusionqld.com.au

TECHNICAL DATA | EF ELBOW 22.5°

Standards:	AS/NZS 4129 SDR11 SDR17
Size:	180mm
Materials:	Polyethelyne (PE) 100
Pressure Rating:	PN16, Water PN10, Gas
Fitting Details:	<ul style="list-style-type: none"> • Injected • 4mm pin connectors



d mm	L10 mm	L1 mm	D mm	D1 mm	Weight kg	Compatibilty SDR	Code
180	278	105	213	180	2.89	11 - 17.6	EFE22180



Note:

Installation should always be performed by a licensed operator. It is the responsibility of the installer to check that both the pipe(s) and fitting(s) that are installed are compatible, only compatible materials should be joined together. It is the responsibility of the licensed installer to check the PN and SDR ratings marked on the fitting(s) and ensure that the pipe is compatible. Correct installation procedures should always be followed.

The drawings, materials and specifications outlined are subject to change without notice due to the continuous improvements and development of our product range.

FUSION QLD PTY LTD

ABN: 42 987 067 369
13 Vision Court, Noosaville, QLD, 4566
42-44 South Link, Dandenong, VIC, 3175

CONTACT

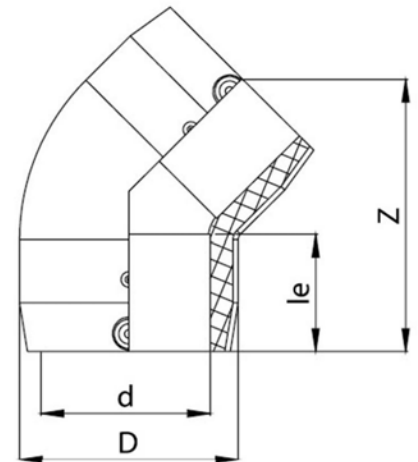
T: +61 7 5474 3000 (Qld)
T: +61 3 9037 4755 (Vic)
E: sales@fusionqld.com.au
W: fusionqld.com.au

TECHNICAL DATA | EF ELBOW 45°

- Standards: AS/NZS 4129 | SDR11 | SDR17
 Size Range: 32 mm - 180 mm
 Materials: Polyethelyne (PE) 100
 Pressure Rating: PN16, Water | PN10, Gas
 Fitting Details:
 - Injected
 - 4mm pin connectors



d mm	D mm	Z mm	le mm	Weight kg	Compatibilty SDR	Code
32	44	99	40	0.085	9, 11	EFE4532
40	52	108	41.5	0.105	9, 11	EFE4540
50	63	124	44.5	0.145	9, 11	EFE4550
63	78.5	137	50	0.240	9, 11	EFE4563
75	94	153	53	0.355	9, 17	EFE4575
90	117	177	60	0.560	9, 17	EFE4590
110	137	213	75	0.940	9, 17	EFE45110
125	154	240	79	1.260	9, 17	EFE45125
160	201	283	89	4.310	9, 17	EFE45160
180	222	299	90	3.330	9, 17	EFE45180



Note:

Installation should always be performed by a licensed operator. It is the responsibility of the installer to check that both the pipe(s) and fitting(s) that are installed are compatible, only compatible materials should be joined together. It is the responsibility of the licensed installer to check the PN and SDR ratings marked on the fitting(s) and ensure that the pipe is compatible. Correct installation procedures should always be followed.

The drawings, materials and specifications outlined are subject to change without notice due to the continuous improvements and development of our product range.

FUSION QLD PTY LTD

ABN: 42 987 067 369
 13 Vision Court, Noosaville, QLD, 4566
 42-44 South Link, Dandenong, VIC, 3175

CONTACT

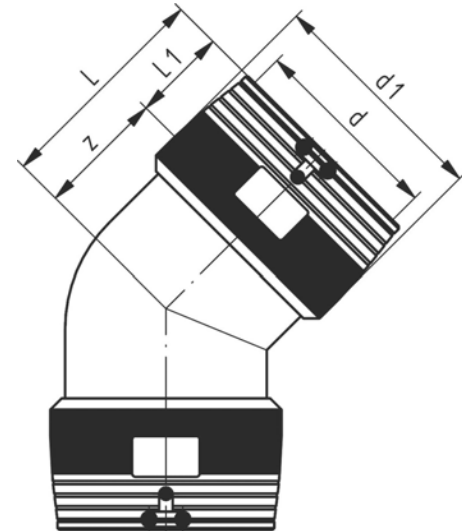
T: +61 7 5474 3000 (Qld)
 T: +61 3 9037 4755 (Vic)
 E: sales@fusionqld.com.au
 W: fusionqld.com.au

TECHNICAL DATA | EF ELBOW 45°

- Standards: AS/NZS 4129 | SDR11 | ISO S5
 Size Range: 200 mm - 250 mm
 Materials: Polyethelyne (PE) 100
 Pressure Rating: PN16 (Water)
- Fitting Details:
- 4 mm pin connectors
 - Limited path fusion indicators
 - Two separate fusion zones



d mm	d1 mm	L mm	L1 mm	z mm	Weight kg	Code
200	250	232	104	128	7.566	EFE45200
225	280	247	112	135	11.3	EFE45225
250	310	275	123	152	13.5	EFE45250



Note:

Installation should always be performed by a licensed operator. It is the responsibility of the installer to check that both the pipe(s) and fitting(s) that are installed are compatible, only compatible materials should be joined together. It is the responsibility of the licensed installer to check the PN and SDR ratings marked on the fitting(s) and ensure that the pipe is compatible. Correct installation procedures should always be followed.

The drawings, materials and specifications outlined are subject to change without notice due to the continuous improvements and development of our product range.

FUSION QLD PTY LTD

ABN: 42 987 067 369
 13 Vision Court, Noosaville, QLD, 4566
 42-44 South Link, Dandenong, VIC, 3175

CONTACT

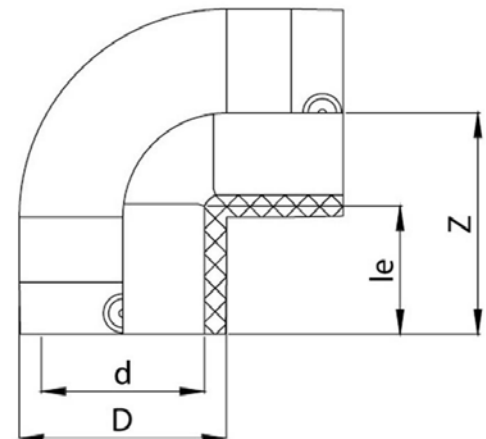
T: +61 7 5474 3000 (Qld)
 T: +61 3 9037 4755 (Vic)
 E: sales@fusionqld.com.au
 W: fusionqld.com.au

TECHNICAL DATA | EF ELBOW 90°

Standards:	AS/NZS 4129 SDR11 SDR17
Size Range:	20 mm - 180 mm
Materials:	Polyethelyne (PE) 100
Pressure Rating:	PN16, Water PN10, Gas
Fitting Details:	<ul style="list-style-type: none"> • Injected • 4mm pin connectors



d mm	D mm	Z mm	le mm	Weight kg	Compatibilty SDR	Code
20	43	63	40	0.160	9, 11	EFE9020
25	35	60	41	0.070	9, 11	EFE9025
32	44	62	40	0.100	9, 11	EFE9032
40	52	65	42	0.125	9, 11	EFE9040
50	63	72	45	0.175	9, 11	EFE9050
63	81	84	50	0.315	9, 11	EFE9063
75	95	92	53	0.440	9, 17	EFE9075
90	113	109	60	0.685	9, 17	EFE9090
110	137	135	73	1.185	9, 17	EFE90110
125	154	152	78	1.655	9, 17	EFE90125
160	201	205	87	4.320	9, 17	EFE90160
180	222	197	90	4.770	9, 17	EFE90180



Note:

Installation should always be performed by a licensed operator. It is the responsibility of the installer to check that both the pipe(s) and fitting(s) that are installed are compatible, only compatible materials should be joined together. It is the responsibility of the licensed installer to check the PN and SDR ratings marked on the fitting(s) and ensure that the pipe is compatible. Correct installation procedures should always be followed.

The drawings, materials and specifications outlined are subject to change without notice due to the continuous improvements and development of our product range.

FUSION QLD PTY LTD

ABN: 42 987 067 369
13 Vision Court, Noosaville, QLD, 4566
42-44 South Link, Dandenong, VIC, 3175

CONTACT

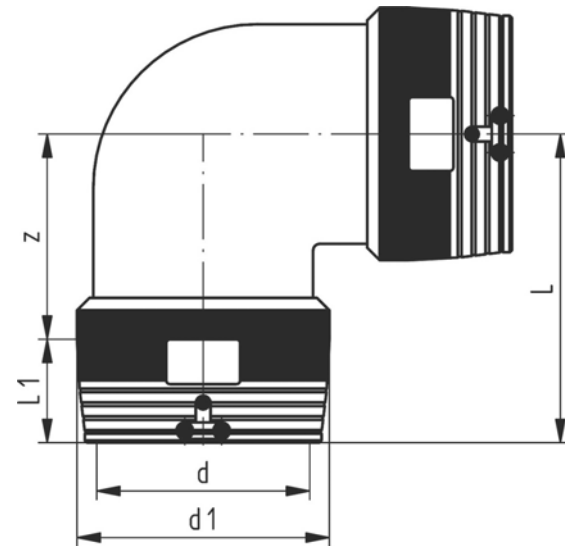
T: +61 7 5474 3000 (Qld)
T: +61 3 9037 4755 (Vic)
E: sales@fusionqld.com.au
W: fusionqld.com.au

TECHNICAL DATA | EF ELBOW 90°

- Standards: AS/NZS 4129 | SDR11 | ISO S5
 Size Range: 200 mm - 250 mm
 Materials: Polyethelyne (PE) 100
 Pressure Rating: PN16, Water | PN10, Gas
- Fitting Details:
- 4 mm pin connectors
 - Limited path fusion indicators
 - Two separate fusion zones



d mm	d1 mm	L mm	L1 mm	z mm	Weight kg	Code
200	250	298	104	194	9.32	EFE90200
225	280	318	112	206	13.22	EFE90225
250	310	347	123	224	16.6	EFE90250



Note:

Installation should always be performed by a licensed operator. It is the responsibility of the installer to check that both the pipe(s) and fitting(s) that are installed are compatible, only compatible materials should be joined together. It is the responsibility of the licensed installer to check the PN and SDR ratings marked on the fitting(s) and ensure that the pipe is compatible. Correct installation procedures should always be followed.

The drawings, materials and specifications outlined are subject to change without notice due to the continuous improvements and development of our product range.

FUSION QLD PTY LTD

ABN: 42 987 067 369
 13 Vision Court, Noosaville, QLD, 4566
 42-44 South Link, Dandenong, VIC, 3175

CONTACT

T: +61 7 5474 3000 (Qld)
 T: +61 3 9037 4755 (Vic)
 E: sales@fusionqld.com.au
 W: fusionqld.com.au

TECHNICAL DATA | EF TEE

Standards: AS/NZS 4129 | SDR11 | SDR17

Size Range: 20 mm - 250 mm

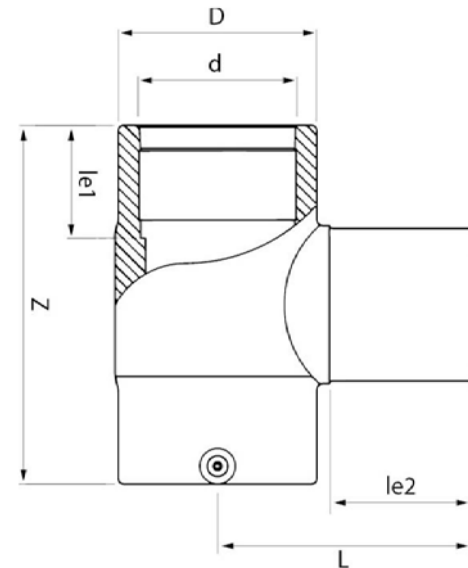
Materials: Polyethylene (PE) 100

Pressure Rating: PN16, Water | PN10, Gas

- Fitting Details:
- Injected
 - 4mm pin connectors



d mm	D mm	Z mm	L mm	le1 mm	le2 mm	Weight kg	Compatibility SDR	Code
20	44	98	90	35	65	0.075	9, 11	EFT20
25	44	98	90	35	65	0.140	9, 11	ETF25
32	44	98	90	35	65	0.110	9, 11	EFT32
40	52	131	91	44	59	0.185	9, 11	EFT40
50	64	138	96	43	55	0.230	9, 11	EFT50
63	80	164	113	49	63	0.380	9, 11	EFT63
75	95	189	129	55	70	0.605	9, 17	EFT75
90	117	210	148	65	79	1.005	9, 17	EFT90
110	138	260	169	72	82	1.730	9, 17	EFT110
125	158	268	180	77	87	2.400	9, 17	EFT125
160	204	320	210	86	98	4.015	9, 17	EFT160
180	228	340	230	88	105	5.810	9, 17	EFT180



Note:

Installation should always be performed by a licensed operator. It is the responsibility of the installer to check that both the pipe(s) and fitting(s) that are installed are compatible, only compatible materials should be joined together. It is the responsibility of the licensed installer to check the PN and SDR ratings marked on the fitting(s) and ensure that the pipe is compatible. Correct installation procedures should always be followed.

The drawings, materials and specifications outlined are subject to change without notice due to the continuous improvements and development of our product range.

FUSION QLD PTY LTD

ABN: 42 987 067 369
13 Vision Court, Noosaville, QLD, 4566
42-44 South Link, Dandenong, VIC, 3175

CONTACT

T: +61 7 5474 3000 (Qld)
T: +61 3 9037 4755 (Vic)
E: sales@fusionqld.com.au
W: fusionqld.com.au

TECHNICAL DATA | EF TEE

Standards: AS/NZS 4129 | SDR11 | ISO S5

Size Range: 200 mm - 250 mm

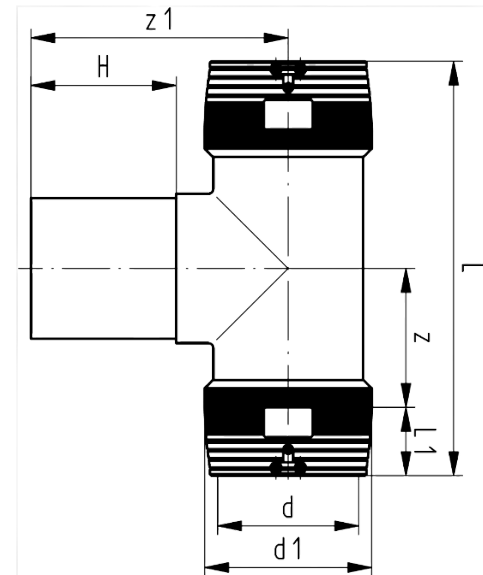
Materials: Polyethelyne (PE) 100

Pressure Rating: PN16, Water | PN10, Gas

- Fitting Details:
- 4mm pin connectors
 - Limited path fusion indicators
 - 2 separate fusion zones



d mm	d1 mm	L mm	L1 mm	z mm	z1 mm	H mm	Weight kg	Code
200	250	590	104	191	250	117	10.800	EFT200
225	280	636	112	206	270	122	15.900	EFT225
250	310	685	123	220	288	127	18.900	EFT250



Note:

Installation should always be performed by a licensed operator. It is the responsibility of the installer to check that both the pipe(s) and fitting(s) that are installed are compatible, only compatible materials should be joined together. It is the responsibility of the licensed installer to check the PN and SDR ratings marked on the fitting(s) and ensure that the pipe is compatible. Correct installation procedures should always be followed.

The drawings, materials and specifications outlined are subject to change without notice due to the continuous improvements and development of our product range.

FUSION QLD PTY LTD

ABN: 42 987 067 369
13 Vision Court, Noosaville, QLD, 4566
42-44 South Link, Dandenong, VIC, 3175

CONTACT

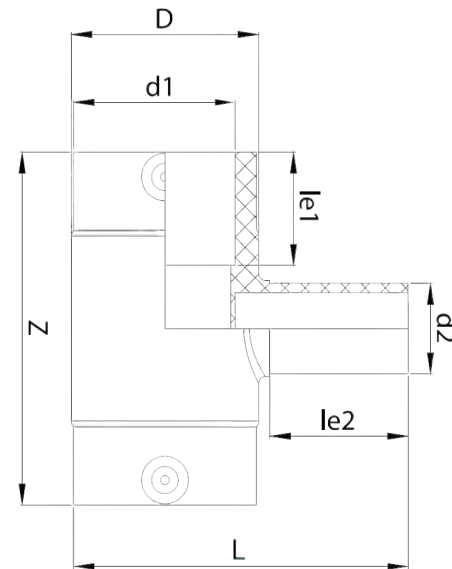
T: +61 7 5474 3000 (Qld)
T: +61 3 9037 4755 (Vic)
E: sales@fusionqld.com.au
W: fusionqld.com.au

TECHNICAL DATA | EF REDUCING TEE

- Standards: AS/NZS 4129 | SDR11 | SDR17
 Size Range: 32 x 20 mm - 180 x 125 mm
 Materials: Polyethylene (PE) 100
 Pressure Rating: PN16, Water | PN10, Gas
 Fitting Details:
 - Injected
 - 4mm pin connectors



d1 mm	d2 mm	D mm	Z mm	L mm	le1 mm	le2 mm	Weight kg	Compatibility SDR	Code
32	20	44	98	88	35	44	0.13	11	EFTR3220
32	25	44	98	88	35	44	0.133	11	EFTR3225
50	40	64	138	89	43	49	0.205	9, 11	EFTR5040
63	32	80	164	92	49	44	0.330	9, 11	EFTR6332
63	40	80	164	98	49	49	0.340	9, 11	EFTR6340
63	50	80	164	105	49	55	0.345	9, 11	EFTR6350
90	63	117	117	132	65	63	0.870	9, 11	EFTR9063
110	63	138	260	149	72	63	1.510	9, 17	EFTR11063
110	90	138	260	165	72	79	1.620	9, 17	EFTR11090
125	90	158	268	172	77	79	2.090	9, 17	EFTR12590
160	90	204	320	191	86	79	3.315	9, 17	EFTR16090
160	110	204	320	191	86	82	3.455	9, 17	EFTR160110
180	125	228	340	207	88	87	5.000	9, 17	EFTR180125



Note:

Installation should always be performed by a licensed operator. It is the responsibility of the installer to check that both the pipe(s) and fitting(s) that are installed are compatible, only compatible materials should be joined together. It is the responsibility of the licensed installer to check the PN and SDR ratings marked on the fitting(s) and ensure that the pipe is compatible. Correct installation procedures should always be followed.

The drawings, materials and specifications outlined are subject to change without notice due to the continuous improvements and development of our product range.

FUSION QLD PTY LTD

ABN: 42 987 067 369
 13 Vision Court, Noosaville, QLD, 4566
 42-44 South Link, Dandenong, VIC, 3175

CONTACT

T: +61 7 5474 3000 (Qld)
 T: +61 3 9037 4755 (Vic)
 E: sales@fusionqld.com.au
 W: fusionqld.com.au

TECHNICAL DATA | EF REDUCING TEE

Standards: AS/NZS 4129 | SDR11 | SDR17

Size Range: 200 x 90 mm - 250 x 160 mm

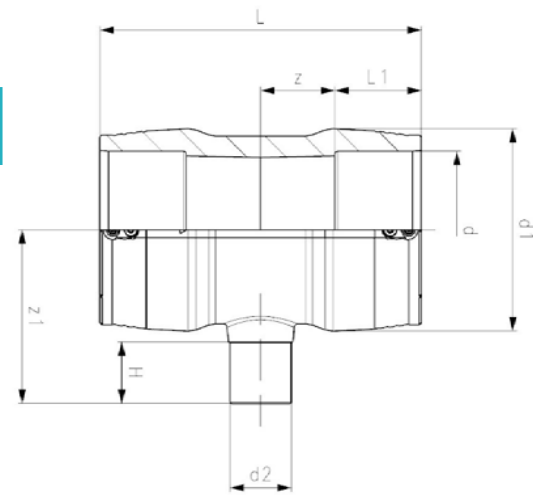
Materials: Polyethelyne (PE) 100

Pressure Rating: PN16, Water | PN10, Gas

- Fitting Details:
- Injected
 - 4mm pin connectors
 - Limited path fusion indicators
 - 2 separate fusion zones



d mm	d2 mm	d1 mm	L mm	L1 mm	z mm	z1 mm	H mm	Weight kg	SDR	Code
200	90	250	595	104	194	216	81	9.012	11 - 26	EFTR20090
200	110	250	600	104	194	219	84	12.400	11 - 26	EFTR200110
200	160	250	595	104	194	237	101	12.400	11 - 26	EFTR200160
225	90	280	666	112	217	228	80	13.100	11 - 26	EFTR22590
225	110	280	670	112	217	238	85	13.100	11 - 26	EFTR225110
225	160	280	667	112	217	258	105	13.600	11 - 26	EFTR225160
250	110	310	709	123	220	284	85	11.660	11 - 26	EFTR250110
250	160	310	711	123	220	266	101	17.070	11 - 26	EFTR250160



Note:

Installation should always be performed by a licensed operator. It is the responsibility of the installer to check that both the pipe(s) and fitting(s) that are installed are compatible, only compatible materials should be joined together. It is the responsibility of the licensed installer to check the PN and SDR ratings marked on the fitting(s) and ensure that the pipe is compatible. Correct installation procedures should always be followed.

The drawings, materials and specifications outlined are subject to change without notice due to the continuous improvements and development of our product range.

FUSION QLD PTY LTD

ABN: 42 987 067 369
13 Vision Court, Noosaville, QLD, 4566
42-44 South Link, Dandenong, VIC, 3175

CONTACT

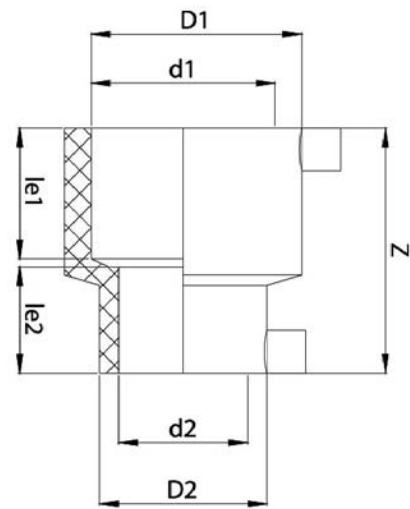
T: +61 7 5474 3000 (Qld)
T: +61 3 9037 4755 (Vic)
E: sales@fusionqld.com.au
W: fusionqld.com.au

TECHNICAL DATA | EF REDUCER

- Standards: AS/NZS 4129 | SDR11 | SDR17
 Size Range: 25 x 20 mm - 180 x 125 mm
 Materials: Polyethylene (PE) 100
 Pressure Rating: PN16, Water | PN10, Gas
 Fitting Details:
 - Injected
 - 4mm pin connectors



d1 mm	d2 mm	D1 mm	D2 mm	Z mm	le1 mm	le2 mm	Weight kg	Compatibility SDR	Code
25	20	34	29	77	38	36	0.046	9, 11	EFR2520
32	20	43	29	77	39	37	0.057	9, 11	EFR3220
32	25	43	34	77	39	37	0.062	9, 11	EFR3225
40	32	52	44	91	46	43	0.085	9, 11	EFR4032
50	32	62	44	91	46	41	0.095	9, 11	EFR5032
50	40	62	52	91	46	43	0.105	9, 11	EFR5040
63	32	78	44	102	52	44	0.140	9, 11	EFR6332
63	40	78	52	102	52	45	0.145	9, 11	EFR6340
63	50	78	62	102	52	48	0.150	9, 11	EFR6350
75	63	98	82	126	61	57	0.330	9, 11	EFR7563
90	63	110	79	123	61	55	0.315	9, 11	EFR9063
110	63	135	80	158	71	53	0.575	9, 11	EFR11063
110	90	134	112	137	68	62	0.560	9, 17	EFR11090
125	90	152	112	145	75	62	0.735	9, 17	EFR12590
160	90	187	116	175	92	67	1.570	9, 17	EFR16090
160	110	200	140	184	89	73	1.675	9, 17	EFR160110
180	125	216	157	221	115	90	2.170	9, 17	EFR180125



Note:

Installation should always be performed by a licensed operator. It is the responsibility of the installer to check that both the pipe(s) and fitting(s) that are installed are compatible, only compatible materials should be joined together. It is the responsibility of the licensed installer to check the PN and SDR ratings marked on the fitting(s) and ensure that the pipe is compatible. Correct installation procedures should always be followed.

The drawings, materials and specifications outlined are subject to change without notice due to the continuous improvements and development of our product range.

FUSION QLD PTY LTD

ABN: 42 987 067 369
 13 Vision Court, Noosaville, QLD, 4566
 42-44 South Link, Dandenong, VIC, 3175

CONTACT

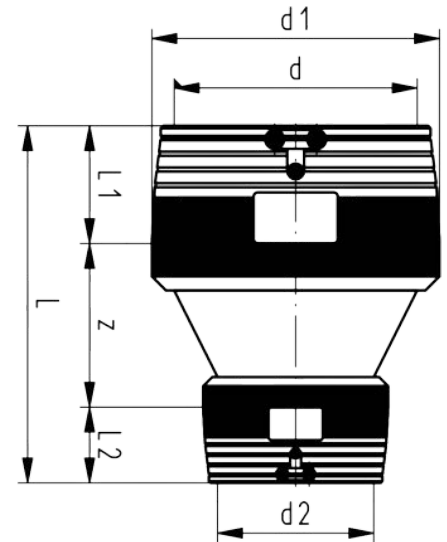
T: +61 7 5474 3000 (Qld)
 T: +61 3 9037 4755 (Vic)
 E: sales@fusionqld.com.au
 W: fusionqld.com.au

TECHNICAL DATA | EF REDUCER

- Standards: AS/NZS 4129 | SDR11 | SDR17
 Size Range: 200 x 160 mm - 250 x 225 mm
 Materials: Polyethelyne (PE) 100
 Pressure Rating: PN16, Water | PN10, Gas
- Fitting Details:
- 4mm pin connectors
 - Limited path fusion indicators
 - 2 separate fusion zones



d mm	d2 mm	d1 mm	L mm	L1 mm	L2 mm	z mm	Weight kg	Code
200	160	250	365	104	90	171	5.098	EFR200160
225	160	280	385	112	90	183	6.00	EFR225160
225	200	280	400	112	104	184	8.20	EFR225200
250	160	310	400	123	90	187	7.860	EFR250160
250	200	310	417	123	104	200	8.480	EFR250200
250	225	310	430	123	112	204	8.450	EFR250225



Note:

Installation should always be performed by a licensed operator. It is the responsibility of the installer to check that both the pipe(s) and fitting(s) that are installed are compatible, only compatible materials should be joined together. It is the responsibility of the licensed installer to check the PN and SDR ratings marked on the fitting(s) and ensure that the pipe is compatible. Correct installation procedures should always be followed.

The drawings, materials and specifications outlined are subject to change without notice due to the continuous improvements and development of our product range.

FUSION QLD PTY LTD

ABN: 42 987 067 369
 13 Vision Court, Noosaville, QLD, 4566
 42-44 South Link, Dandenong, VIC, 3175

CONTACT

T: +61 7 5474 3000 (Qld)
 T: +61 3 9037 4755 (Vic)
 E: sales@fusionqld.com.au
 W: fusionqld.com.au

TECHNICAL DATA | EF END CAP

Standards: AS/NZS 4129 | SDR11 | SDR17

Size Range: 20 mm - 250 mm

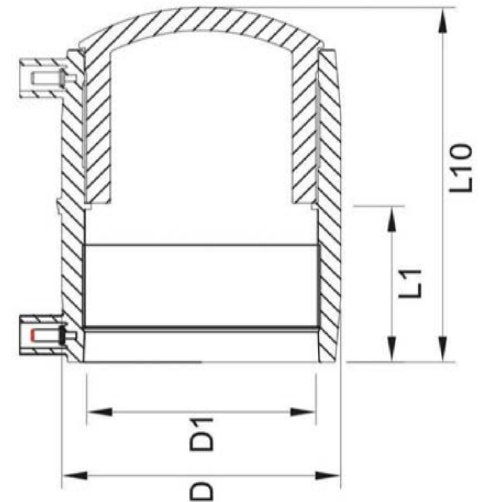
Materials: Polyethylene (PE) 100

Pressure Rating: PN16, Water | PN10, Gas

- Fitting Details:
- Injected
 - 4mm automatic pin



size mm	L10 mm	L1 mm	D mm	D1 mm	Weight kg	SDR	Code
20	82	37.5	29	30	0.045	11	EFCAP20
25	82	27.5	33.5	25	0.052	11	EFCAP25
32	84	37.5	43	32	0.08	11	EFCAP32
40	97	44	51.5	40	0.118	11	EFCAP40
50	101	44	61.5	50	0.138	11	EFCAP50
63	115	50	78	63	0.248	11 - 17.6	EFCAP63
75	133	59.5	92.5	75	0.384	11 - 17.6	EFCAP75
90	138	60	109.5	90	0.545	11 - 17.6	EFCAP90
110	164	70	133	110	1.885	11 - 17.6	EFCAP110
125	175	75	151	125	1.224	11 - 17.6	EFCAP125
140	236	89	176	140	1.845	11 - 17.6	EFCAP140
160	202	86	195	160	2.242	11 - 17.6	EFCAP160
180	214	92	219	180	3.126	11 - 17.6	EFCAP180
200	215	92	242	200	3.853	11 - 17.6	EFCAP200
225	251.7	111	270	225	6	11 - 17.6	EFCAP225
250	259.5	111	303	250	7.73	11 - 21	EFCAP250



Note:

Installation should always be performed by a licensed operator. It is the responsibility of the installer to check that both the pipe(s) and fitting(s) that are installed are compatible, only compatible materials should be joined together. It is the responsibility of the licensed installer to check the PN and SDR ratings marked on the fitting(s) and ensure that the pipe is compatible. Correct installation procedures should always be followed.

The drawings, materials and specifications outlined are subject to change without notice due to the continuous improvements and development of our product range.

FUSION QLD PTY LTD

ABN: 42 987 067 369
13 Vision Court, Noosaville, QLD, 4566
42-44 South Link, Dandenong, VIC, 3175

CONTACT

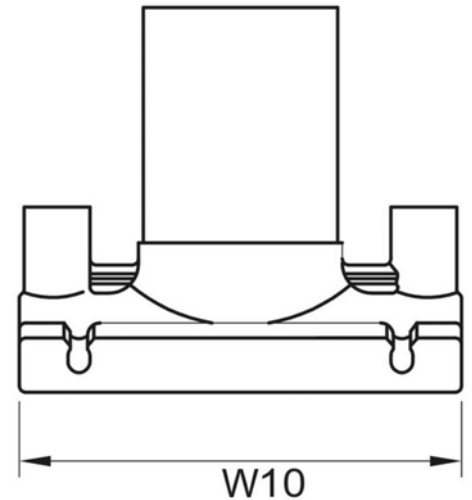
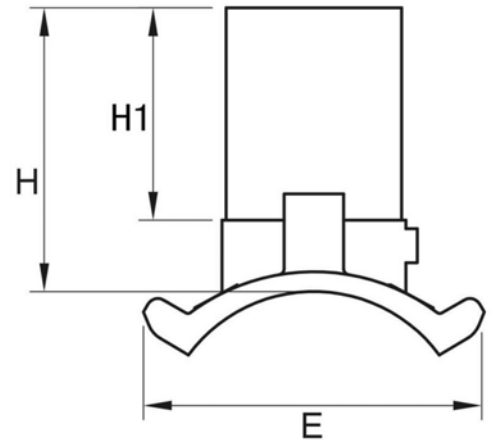
T: +61 7 5474 3000 (Qld)
T: +61 3 9037 4755 (Vic)
E: sales@fusionqld.com.au
W: fusionqld.com.au

TECHNICAL DATA | EF BRANCH SADDLE

Standards: AS/NZS 4129 | SDR11 | SDR17
 Size Range: 250 mm x 63 mm - 450 mm x 63 mm
 Materials: Polyethelyne (PE) 100

Pressure Rating: PN16, Water | PN10, Gas

- Fitting Details:
- 63mm outlet
 - 4mm automatic pin



size mm	H mm	H1 mm	W10 mm	E mm	Weight kg	Compatibility SDR	Code
250 x 63	125	75	146	122	0.36	11 - 21	EFBSU25063
280 x 63	140	75	146	122	0.35	11 - 21	EFBSU28063
315 x 63	140	75	146	122	0.382	11 - 21	EFBSU31563
355 x 63	140	75	146	122	0.391	11 - 21	EFBSU35563
400 x 63	146	72	146	152	0.4	11 -21	EFBSU40063
450 x 63	146	72	146	152	0.4	11 - 21	EFBSU45063

Note:

Installation should always be performed by a licensed operator. It is the responsibility of the installer to check that both the pipe(s) and fitting(s) that are installed are compatible, only compatible materials should be joined together. It is the responsibility of the licensed installer to check the PN and SDR ratings marked on the fitting(s) and ensure that the pipe is compatible. Correct installation procedures should always be followed.

The drawings, materials and specifications outlined are subject to change without notice due to the continuous improvements and development of our product range.

FUSION QLD PTY LTD

ABN: 42 987 067 369
 13 Vision Court, Noosaville, QLD, 4566
 42-44 South Link, Dandenong, VIC, 3175

CONTACT

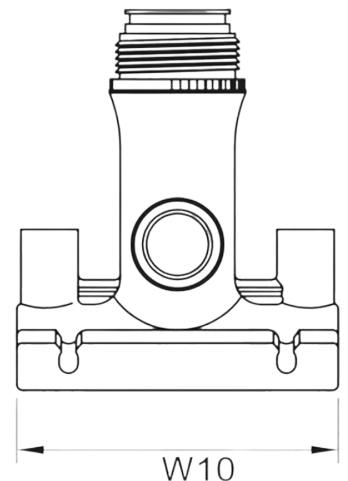
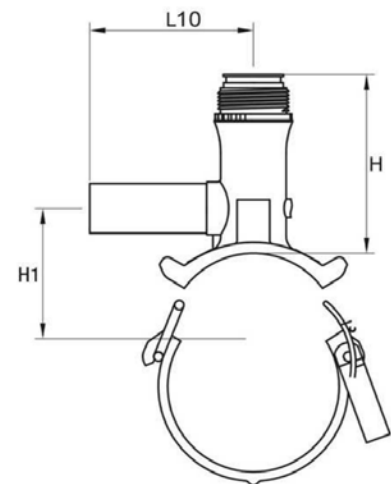
T: +61 7 5474 3000 (Qld)
 T: +61 3 9037 4755 (Vic)
 E: sales@fusionqld.com.au
 W: fusionqld.com.au

TECHNICAL DATA | EF TAPPING TEE WITH UNDERCLAMP

- Standards: AS/NZS 4129 | SDR11 | SDR17
 Size Range: 63 x 40 mm - 225 x 63 mm
 Materials: Polyethelyne (PE) 100
 Pressure Rating: PN16, Water | PN10, Gas
- Fitting Details:
- 4mm automatic pin
 - 40 - 63 mm outlet
 - Without Tube



Size mm	L10 mm	H mm	H1 mm	W10 mm	Weight kg	Compatibility SDR	Code
63 x 40	165	155	59.5	146	0.95	11	EFTTU6340
63 x 50	165	155	59.5	146	0.955	11	EFTTU6350
63 x 63	165	155	59.5	146	1.01	11	EFTTU6363
75 x 40	165	152	57	146	1.107	11 - 17.6	EFTTU7540
75 x 50	165	152	57	146	1.1	11 - 17.6	EFTTU7550
75 x 63	165	152	57	146	1.15	11 - 17.6	EFTTU7563
90 x 40	165	152	57	146	1.064	11 - 17.6	EFTTU9040
90 x 50	165	152	57	146	1.1	11 - 17.6	EFTTU9050
90 x 63	165	152	57	146	1.12	11 - 17.6	EFTTU9063
110 x 40	165	176	105	146	1.087	11 - 17.6	EFTTU11040
110 x 50	165	176	105	146	1.1	11 - 17.6	EFTTU11050
110 x 63	165	176	105	146	1.15	11 - 17.6	EFTTU11063
125 x 40	165	178	112	146	1.082	11 - 17.6	EFTTU12540
125 x 50	165	178	112	146	1.098	11 - 17.6	EFTTU12550
125 x 63	165	178	112	146	1.15	11 - 17.6	EFTTU12563
160 x 40	165	182	137	146	1.13	11 - 17.6	EFTTU16040
160 x 50	165	182	137	146	1.14	11 - 17.6	EFTTU16050
160 x 63	165	182	137	146	1.185	11 - 17.6	EFTTU16063



The drawings, materials and specifications outlined are subject to change without notice due to the continuous improvement and development of our product range.

FUSION QLD PTY LTD

ABN: 42 987 067 369
 13 Vision Court, Noosaville, QLD, 4566
 42-44 South Link, Dandenong, VIC, 3175

CONTACT

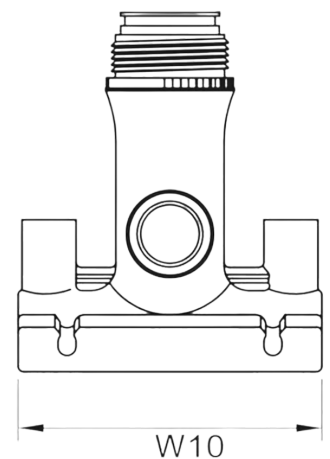
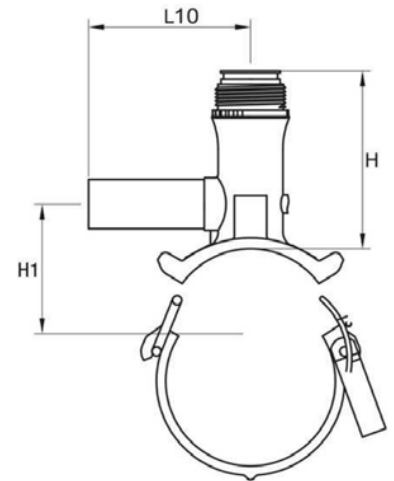
T: +61 7 5474 3000 (Qld)
 T: +61 3 9037 4755 (Vic)
 E: sales@fusionqld.com.au
 W: fusionqld.com.au

TECHNICAL DATA | EF TAPPING TEE WITH UNDERCLAMP

- Standards: AS/NZS 4129 | SDR11 | SDR17
 Size Range: 63 x 40 mm - 225 x 63 mm
 Materials: Polyethelyne (PE) 100
 Pressure Rating: PN16, Water | PN10, Gas
- Fitting Details:
- 4mm automatic pin
 - 40 - 63 mm outlet
 - Without Tube



Size mm	L10 mm	H mm	H1 mm	W10 mm	Weight kg	Compatibility SDR	Code
180 x 40	165	183	147	146	1.152	11 - 17.6	EFTTU18040
180 x 50	165	183	147	146	1.17	11 - 17.6	EFTTU18050
180 x 63	165	183	147	146	1.217	11 - 17.6	EFTTU18063
200 x 40	165	183	157	146	1.12	11 - 17.6	EFTTU20040
200 x 50	165	183	157	146	1.174	11 - 17.6	EFTTU20050
200 x 63	165	183	157	146	1.207	11 - 17.6	EFTTU20063
225 x 40	165	183	169	146	1.176	11 - 17.6	EFTTU22540
225 x 50	165	183	169	146	1.19	11 - 17.6	EFTTU22550
225 x 63	165	183	169	146	1.26	11 - 17.6	EFTTU22563



Note:

Installation should always be performed by a licensed operator. It is the responsibility of the installer to check that both the pipe(s) and fitting(s) that are installed are compatible, only compatible materials should be joined together. It is the responsibility of the licensed installer to check the PN and SDR ratings marked on the fitting(s) and ensure that the pipe is compatible. Correct installation procedures should always be followed.

The drawings, materials and specifications outlined are subject to change without notice due to the continuous improvements and development of our product range.

FUSION QLD PTY LTD

ABN: 42 987 067 369
 13 Vision Court, Noosaville, QLD, 4566
 42-44 South Link, Dandenong, VIC, 3175

CONTACT

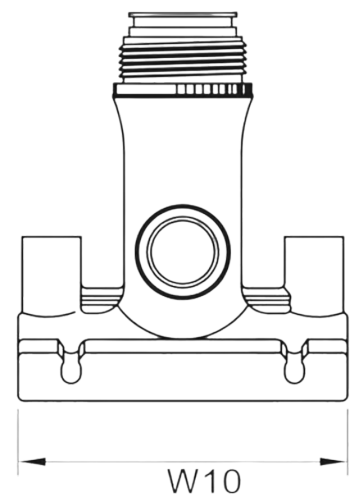
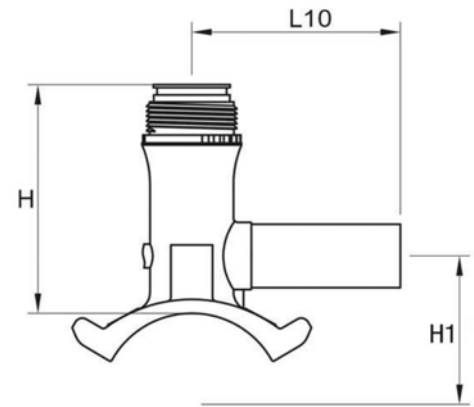
T: +61 7 5474 3000 (Qld)
 T: +61 3 9037 4755 (Vic)
 E: sales@fusionqld.com.au
 W: fusionqld.com.au

TECHNICAL DATA | EF TAPPING TEE TOP LOAD

- Standards: AS/NZS 4129 | SDR11 | SDR17
 Size Range: 250 x 25 mm - 450 x 50 mm
 Materials: Polyethelyne (PE) 100
 Pressure Rating: PN16, Water | PN10, Gas
- Fitting Details:
- 4mm automatic pin
 - 20 - 32 mm outlet
 - Without Tube



Size mm	L10 mm	H mm	H1 mm	W10 mm	Weight kg	SDR	Code
250 x 25	105	122	158	120	0.373	11 - 21	EFTT25025
250 x 32	105	122	158	120	0.39	11 - 21	EFTT25032
280 x 20	105	122	176	120	0.426	11 - 21	EFTT28020
280 x 25	105	122	176	120	0.426	11 - 21	EFTT28025
280 x 32	105	122	176	120	0.426	11 - 21	EFTT28032
315 x 20	105	122	194	120	0.4	11 - 21	EFTT31520
315 x 25	105	122	194	120	0.41	11 - 21	EFTT31525
315 x 32	105	122	194	120	0.41	11 - 21	EFTT31532
355 x 20	105	122	214	120	0.4	11 - 21	EFTT35525
355 x 25	105	122	214	120	0.41	11 - 21	EFTT35532
355 x 32	105	122	214	120	0.4	11 - 21	EFTT35540



Note:

Installation should always be performed by a licensed operator. It is the responsibility of the installer to check that both the pipe(s) and fitting(s) that are installed are compatible, only compatible materials should be joined together. It is the responsibility of the licensed installer to check the PN and SDR ratings marked on the fitting(s) and ensure that the pipe is compatible. Correct installation procedures should always be followed.

The drawings, materials and specifications outlined are subject to change without notice due to the continuous improvements and development of our product range.

FUSION QLD PTY LTD

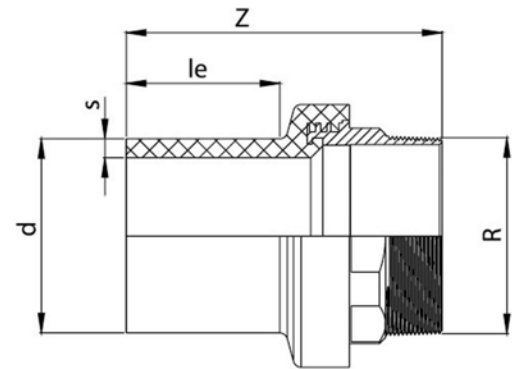
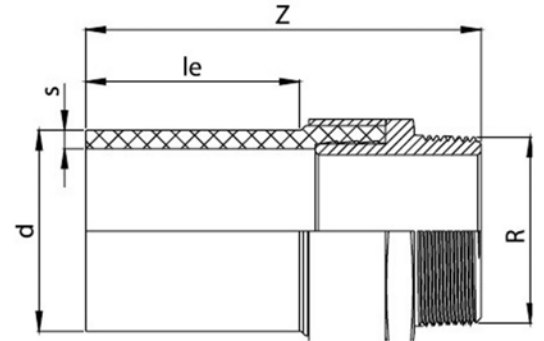
ABN: 42 987 067 369
 13 Vision Court, Noosaville, QLD, 4566
 42-44 South Link, Dandenong, VIC, 3175

CONTACT

T: +61 7 5474 3000 (Qld)
 T: +61 3 9037 4755 (Vic)
 E: sales@fusionqld.com.au
 W: fusionqld.com.au

TECHNICAL DATA | BRASS TRANSITION ADAPTOR MALE

- Standards: AS/NZS 4129 | MS58
- Size Range: 20 x 1/2" - 125 x 4"
- Materials: Polyethylene (PE) 100
Brass
- Pressure Rating: PN16, Water | PN10, Gas
*Compatible for water applications only
- Fitting Details:
 - Male Thread
 - Injected
 - Long Spigot



d mm	R inch	le mm	Z mm	S mm	Weight kg	Code
20	1/2"	41	76	3	0.060	EFTAM2012
25	3/4"	41	79	3	0.100	EFTAM2534
32	1"	44	86	3	0.140	EFTAM321
40	1 1/4"	49	101	3.7	0.255	EFTAM40114
50	1 1/2"	55	112	4.6	0.370	EFTAM50112
63	2"	63	125	5.8	0.560	EFTAM632
75 *	2 1/2"	70	146	6.8	0.980	EFTAM75212
90 *	3"	79	168	8.2	1.410	EFTAM903
110 *	4"	82	179	10	2.080	EFTAM1104
125 *	4"	87	186	11.4	2.230	EFTAM1254

Note:

Installation should always be performed by a licensed operator. It is the responsibility of the installer to check that both the pipe(s) and fitting(s) that are installed are compatible, only compatible materials should be joined together. It is the responsibility of the licensed installer to check the PN and SDR ratings marked on the fitting(s) and ensure that the pipe is compatible. Correct installation procedures should always be followed.

The drawings, materials and specifications outlined are subject to change without notice due to the continuous improvements and development of our product range.

FUSION QLD PTY LTD

ABN: 42 987 067 369
13 Vision Court, Noosaville, QLD, 4566
42-44 South Link, Dandenong, VIC, 3175

CONTACT

T: +61 7 5474 3000 (Qld)
T: +61 3 9037 4755 (Vic)
E: sales@fusionqld.com.au
W: fusionqld.com.au

TECHNICAL DATA | BRASS TRANSITION ADAPTOR FEMALE

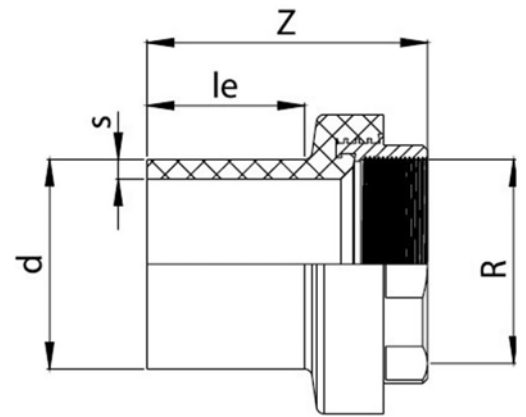
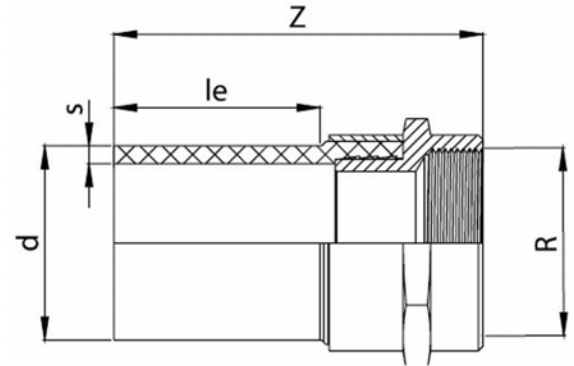
Standards: AS/NZS 4129 | MS58

Size Range: 20 x 1/2" - 125 x 4"

Materials: Polyethelyne (PE) 100
Brass

Pressure Rating: PN16, Water | PN10, Gas
*Compatible for water applications only

- Fitting Details:
- Female Thread
 - Injected
 - Long Spigot



d mm	R inch	le mm	Z mm	S mm	Weight kg	Code
20	1/2"	41	75	3	0.065	EFTAF2012
25	3/4"	41	78	3	0.095	EFTAF2534
32	1"	44	85	3	0.145	EFTAF321
40	1 1/4"	49	100	3.7	0.270	EFTAF40114
50	1 1/2"	55	111	4.6	0.375	EFTAF50112
63	2"	63	124	5.8	0.550	EFTAF632
75 *	2 1/2"	70	129	6.8	0.825	EFTAF75212
90 *	3"	79	144	8.2	1.130	EFTAF903
110 *	4"	82	147	10	1.690	EFTAF1104
125 *	4"	87	153	11.4	1.760	EFTAF1254

Note:

Installation should always be performed by a licensed operator. It is the responsibility of the installer to check that both the pipe(s) and fitting(s) that are installed are compatible, only compatible materials should be joined together. It is the responsibility of the licensed installer to check the PN and SDR ratings marked on the fitting(s) and ensure that the pipe is compatible. Correct installation procedures should always be followed.

The drawings, materials and specifications outlined are subject to change without notice due to the continuous improvements and development of our product range.

FUSION QLD PTY LTD

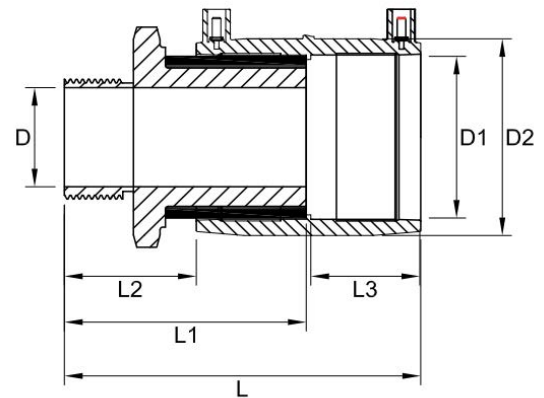
ABN: 42 987 067 369
13 Vision Court, Noosaville, QLD, 4566
42-44 South Link, Dandenong, VIC, 3175

CONTACT

T: +61 7 5474 3000 (Qld)
T: +61 3 9037 4755 (Vic)
E: sales@fusionqld.com.au
W: fusionqld.com.au

TECHNICAL DATA | TRANSITION COUPLER MALE

- Standards: AS/NZS 4129 | MS58
 Size Range: 25mm x 3/4" - 63mm x 2"
 Materials:
 - Polyethylene (PE) 100
 - Coated CW617N Brass
 Pressure Rating: PN16, Water | PN10, Gas
 Fitting Details: Male BSP Thread



D1 mm	D inch	L mm	L1 mm	L2 mm	L3 mm	D2 mm	Fusion Time Secs	Cooling Time mins	Weight kg	Code
25	3/4"	138.5	99	61.5	37.5	33.5	30	3	0.159	EFTCM2534
32	1/2"	170	100	62.5	37.5	43	45	3	0.38	EFTCM3212
32	3/4"	138.5	99	61.5	37	34	30	3	0.18	EFTCM3234
32	1"	149.5	110	72.5	38	43	45	3	0.24	EFTCM321
32	1 1/4"	166	121	75	43	44	50	5	0.35	EFTCM32114
32	1 1/2"	165.5	134	74.5	41	44	60	5	0.45	EFTCM32112
40	1	155	110	64	43	44	50	5	0.255	EFTCM401
40	1 1/4"	167	121	77	44	51.5	40	5	0.36	EFTCM40114
40	1 1/2"	179	134	88	43	52	60	5	0.45	EFTCM40112
50	1	160	110	69	41	44	60	5	0.28	EFTCM501
50	1 1/4"	158	121	67	43	44	60	5	0.37	EFTCM50114
50	1 1/2"	181	134	90	44	61.5	90	5	0.47	EFTCM50112
50	2"	200	150	98	48	62	120	10	0.71	EFTCM502
63	1 1/4"	171	121	69	45	78	70	5	0.42	EFTCM63114
63	1 1/2"	184	134	82	48	78	120	10	0.50	EFTCM63112
63	2"	203	150	101	49	78	35	3	0.71	EFTCM632

Note:

Installation should always be performed by a licensed operator. It is the responsibility of the installer to check that both the pipe(s) and fitting(s) that are installed are compatible, only compatible materials should be joined together. It is the responsibility of the licensed installer to check the PN and SDR ratings marked on the fitting(s) and ensure that the pipe is compatible. Correct installation procedures should always be followed.

The drawings, materials and specifications outlined are subject to change without notice due to the continuous improvements and development of our product range.

FUSION QLD PTY LTD

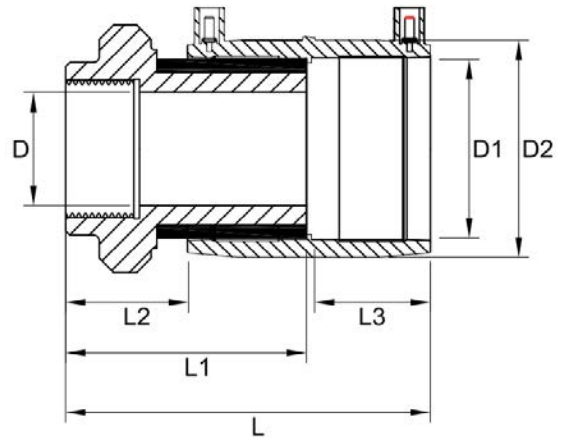
ABN: 42 987 067 369
 13 Vision Court, Noosaville, QLD, 4566
 42-44 South Link, Dandenong, VIC, 3175

CONTACT

T: +61 7 5474 3000 (Qld)
 T: +61 3 9037 4755 (Vic)
 E: sales@fusionqld.com.au
 W: fusionqld.com.au

TECHNICAL DATA | TRANSITION COUPLER FEMALE

- Standards: AS/NZS 4129 | MS58
 Size Range: 25mm x 3/4" - 63mm x 2"
 Materials:
 - Polyethylene (PE) 100
 - Coated CW617N Brass
 Pressure Rating: PN16, Water | PN10, Gas
 Fitting Details: Female BSP Thread



D1 mm	D inch	L mm	L1 mm	L2 mm	L3 mm	D2 mm	Fusion Time Secs	Cooling Time mins	Weight kg	Code
25	3/4"	130.5	91	53.5	37.5	33.5	30	3	0.18	EFTCF2534
32	3/4"	131	91	54	37	34	30	3	0.21	EFTCM3234
32	1"	139.5	100	62.5	38	43	45	3	0.25	EFTCM321
40	1"	148	100	57	43	44	50	5	0.28	EFTCM401
40	1 1/4"	155	109	65	44	51.5	40	5	0.39	EFTCM40114
40	1 1/2"	172	124	81	43	52	60	5	0.53	EFTCM40112
50	1 1/4"	157	109	66	43	44	60	5	0.38	EFTCM50114
50	1 1/2"	171	124	80	44	61.5	90	5	0.50	EFTCM50112
50	2"	195	141	93	48	62	120	10	0.78	EFTCM502
63	1"	150	100	48	52	78	90	5	0.50	EFTCM63114
63	1 1/2"	178	124	76	48	78	120	10	0.55	EFTCM63112
63	2"	194	141	92	49	78	35	3	0.78	EFTCM632

Note:

Installation should always be performed by a licensed operator. It is the responsibility of the installer to check that both the pipe(s) and fitting(s) that are installed are compatible, only compatible materials should be joined together. It is the responsibility of the licensed installer to check the PN and SDR ratings marked on the fitting(s) and ensure that the pipe is compatible. Correct installation procedures should always be followed.

The drawings, materials and specifications outlined are subject to change without notice due to the continuous improvements and development of our product range.

FUSION QLD PTY LTD

ABN: 42 987 067 369
 13 Vision Court, Noosaville, QLD, 4566
 42-44 South Link, Dandenong, VIC, 3175

CONTACT

T: +61 7 5474 3000 (Qld)
 T: +61 3 9037 4755 (Vic)
 E: sales@fusionqld.com.au
 W: fusionqld.com.au

TECHNICAL DATA | 45° TRANSITION ELBOW MALE

Standards: AS/NZS 4129 | MS58

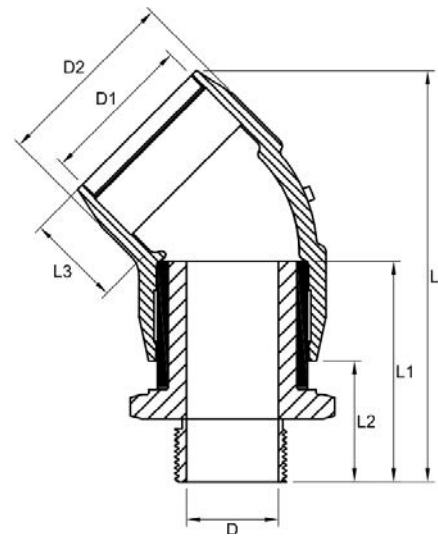
Size Range: 32mm x 1" - 63mm x 2"

Materials:

- Polyethylene (PE) 100
- Coated CW617N Brass

Pressure Rating: PN16, Water | PN10, Gas

Fitting Details: Male BSP Thread



D1 mm	D inch	L mm	L1 mm	L2 mm	L3 mm	D2 mm	Fusion Time Secs	Cooling Time mins	Weight kg	Code
32	1"	160	100	61	39	44	45	5	0.26	EFTEM45321
50	1 1/2"	203.5	124	79.5	44.5	64	90	5	0.54	EFTEM4550112
63	2"	228	141	91	50	78.5	35	5	0.78	EFTEM45632

Note:

Installation should always be performed by a licensed operator. It is the responsibility of the installer to check that both the pipe(s) and fitting(s) that are installed are compatible, only compatible materials should be joined together. It is the responsibility of the licensed installer to check the PN and SDR ratings marked on the fitting(s) and ensure that the pipe is compatible. Correct installation procedures should always be followed.

The drawings, materials and specifications outlined are subject to change without notice due to the continuous improvements and development of our product range.

FUSION QLD PTY LTD

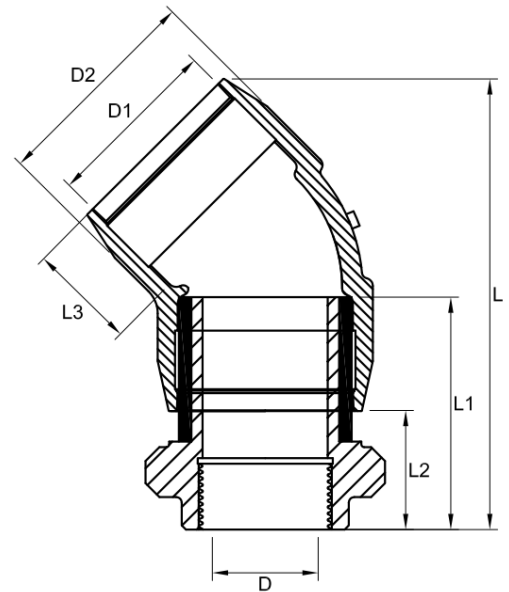
ABN: 42 987 067 369
13 Vision Court, Noosaville, QLD, 4566
42-44 South Link, Dandenong, VIC, 3175

CONTACT

T: +61 7 5474 3000 (Qld)
T: +61 3 9037 4755 (Vic)
E: sales@fusionqld.com.au
W: fusionqld.com.au

TECHNICAL DATA | 45° TRANSITION ELBOW FEMALE

- Standards: AS/NZS 4129 | MS58
 Size Range: 20mm x 1/2" - 50mm x 1 1/2"
 Materials:
 - Polyethylene (PE) 100
 - Coated CW617N Brass
 Pressure Rating: PN16, Water | PN10, Gas
 Fitting Details: Female BSP Thread



D1 mm	D inch	L mm	L1 mm	L2 mm	L3 mm	D2 mm	Fusion Time Secs	Cooling Time mins	Weight kg	Code
32	1"	160	100	61	39	44	45	5	0.55	EFTEF45321
40	1 1/4"	175.5	109	67.5	41.5	53	50	5	0.43	EFTEF4540114
50	1 1/2"	203.5	124	79.5	44.5	64	90	5	0.34	EFTEF4550112
63	2"	228	141	91	50	78.5	35	5	0.78	EFTEF45632

Note:

Installation should always be performed by a licensed operator. It is the responsibility of the installer to check that both the pipe(s) and fitting(s) that are installed are compatible, only compatible materials should be joined together. It is the responsibility of the licensed installer to check the PN and SDR ratings marked on the fitting(s) and ensure that the pipe is compatible. Correct installation procedures should always be followed.

The drawings, materials and specifications outlined are subject to change without notice due to the continuous improvements and development of our product range.

FUSION QLD PTY LTD

ABN: 42 987 067 369
 13 Vision Court, Noosaville, QLD, 4566
 42-44 South Link, Dandenong, VIC, 3175

CONTACT

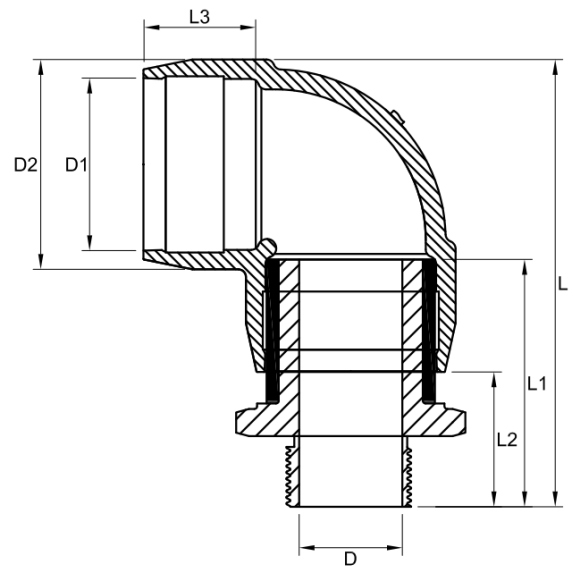
T: +61 7 5474 3000 (Qld)
 T: +61 3 9037 4755 (Vic)
 E: sales@fusionqld.com.au
 W: fusionqld.com.au

TECHNICAL DATA | 90° TRANSITION ELBOW MALE

Standards: AS/NZS 4129 | MS58
 Size Range: 20mm x 1/2" - 63mm x 2"
 Materials:

- Polyethylene (PE) 100
- Coated CW617N Brass

 Pressure Rating: PN16, Water | PN10, Gas
 Fitting Details: Male BSP Thread



D1 mm	D inch	L mm	L1 mm	L2 mm	L3 mm	D2 mm	Fusion Time Secs	Cooling Time mins	Weight kg	Code
25	3/4"	131	99	55	44	35	30	3	0.19	EFTEM902534
32	1"	154	110	70	40	44	60	5	0.28	EFTEM90321
40	1 1/4"	170	121	79	42	52	50	5	0.40	EFTEM9040114
50	1 1/2"	192	124	79.5	44.5	63	90	5	0.54	EFTEM9050112
63	2"	223	150	100	50	81	35	5	0.87	EFTEM90632

Note:

Installation should always be performed by a licensed operator. It is the responsibility of the installer to check that both the pipe(s) and fitting(s) that are installed are compatible, only compatible materials should be joined together. It is the responsibility of the licensed installer to check the PN and SDR ratings marked on the fitting(s) and ensure that the pipe is compatible. Correct installation procedures should always be followed.

The drawings, materials and specifications outlined are subject to change without notice due to the continuous improvements and development of our product range.

FUSION QLD PTY LTD

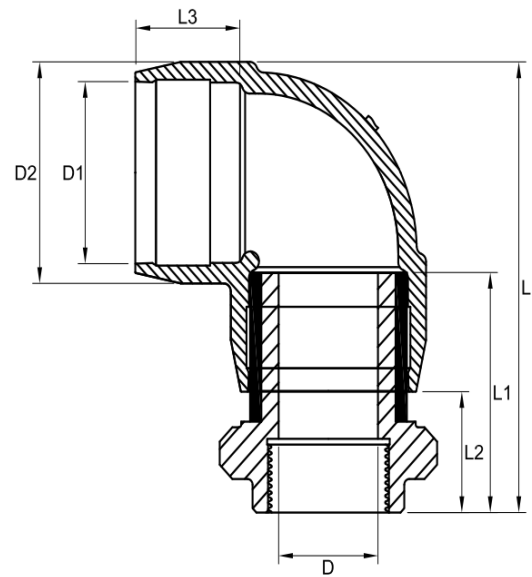
ABN: 42 987 067 369
 13 Vision Court, Noosaville, QLD, 4566
 42-44 South Link, Dandenong, VIC, 3175

CONTACT

T: +61 7 5474 3000 (Qld)
 T: +61 3 9037 4755 (Vic)
 E: sales@fusionqld.com.au
 W: fusionqld.com.au

TECHNICAL DATA | 90° TRANSITION ELBOW FEMALE

- Standards: AS/NZS 4129 | MS58
 Size Range: 25mm x 3/4" - 63mm x 2"
 Materials:
 - Polyethylene (PE) 100
 - Coated CW617N Brass
 Pressure Rating: PN16, Water | PN10, Gas
 Fitting Details: Female BSP Thread



D1 mm	D inch	L mm	L1 mm	L2 mm	L3 mm	D2 mm	Fusion Time Secs	Cooling Time mins	Weight kg	Code
25	3/4"	123	91	47	44	35	30	3	0.31	EFTEF902534
32	1"	144	100	60	40	44	60	5	0.30	EFTEF90321
40	1 1/4"	158	109	67	42	52	50	5	0.52	EFTEF9040114
50	1 1/2"	182	124	79	45	63	90	5	0.65	EFTEF9050112
63	2"	214	141	91	50	81	35	5	0.95	EFTEF90632

Note:

Installation should always be performed by a licensed operator. It is the responsibility of the installer to check that both the pipe(s) and fitting(s) that are installed are compatible, only compatible materials should be joined together. It is the responsibility of the licensed installer to check the PN and SDR ratings marked on the fitting(s) and ensure that the pipe is compatible. Correct installation procedures should always be followed.

The drawings, materials and specifications outlined are subject to change without notice due to the continuous improvements and development of our product range.

FUSION QLD PTY LTD

ABN: 42 987 067 369
 13 Vision Court, Noosaville, QLD, 4566
 42-44 South Link, Dandenong, VIC, 3175

CONTACT

T: +61 7 5474 3000 (Qld)
 T: +61 3 9037 4755 (Vic)
 E: sales@fusionqld.com.au
 W: fusionqld.com.au