

TECHNICAL DATA | END CAP SHORT SDR11

Standards: AS/NZS 4129 | SDR11

Size Range: 315mm - 630mm

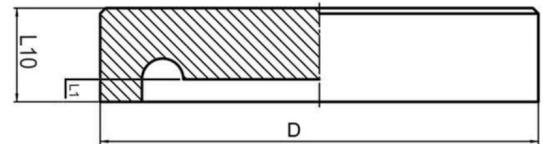
Materials: Polyethelyne (PE) 100

Pressure Rating: PN16, Water | 10 BAR, Gas

Fitting Details: Injected



D mm	L10 mm	L1 mm	Weight kg	Code
315	75	20	4.4	BWCAP11315
355	85	20	6.5	BWCAP11355
400	90	20	8.8	BWCAP11400
450	100	20	12.6	BWCAP11450
500	110	20	17.3	BWCAP11500
560	120	20	24	BWCAP11560
630	140	30	48.8	BWCAP11630



Note:

Installation should always be performed by a licensed operator. It is the responsibility of the installer to check that both the pipe(s) and fitting(s) that are installed are compatible, only compatible materials should be joined together. It is the responsibility of the licensed installer to check the PN and SDR ratings marked on the fitting(s) and ensure that the pipe is compatible. Correct installation procedures should always be followed.

The drawings, materials and specifications outlined are subject to change without notice due to the continuous improvements and development of our product range.

FUSION QLD PTY LTD

ABN: 42 987 067 369
13 Vision Court, Noosaville, QLD, 4566
42-44 South Link, Dandenong, VIC, 3175

CONTACT

T: +61 7 5474 3000 (Qld)
T: +61 3 9037 4755 (Vic)
E: sales@fusionqld.com.au
W: fusionqld.com.au