

TECHNICAL DATA | END CAP SHORT SDR17

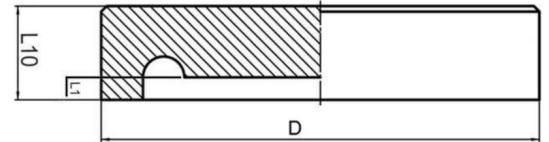
Standards: AS/NZS 4129 | SDR17

Size Range: 355mm - 800mm

Materials: Polyethelyne (PE) 100

Pressure Rating: PN10, Water | 5 BAR, Gas

Fitting Details: Injected



D mm	L10 mm	L1 mm	Weight kg	Code
355	75	20	5.4	BWCAP17355
400	80	20	7.4	BWCAP17400
450	90	20	10.9	BWCAP17450
500	95	20	14.3	BWCAP17500
560	105	20	20.1	BWCAP17560
630	125	30	28.9	BWCAP17630

Note:

Installation should always be performed by a licensed operator. It is the responsibility of the installer to check that both the pipe(s) and fitting(s) that are installed are compatible, only compatible materials should be joined together. It is the responsibility of the licensed installer to check the PN and SDR ratings marked on the fitting(s) and ensure that the pipe is compatible. Correct installation procedures should always be followed.

The drawings, materials and specifications outlined are subject to change without notice due to the continuous improvements and development of our product range.

FUSION QLD PTY LTD

ABN: 42 987 067 369
13 Vision Court, Noosaville, QLD, 4566
42-44 South Link, Dandenong, VIC, 3175

CONTACT

T: +61 7 5474 3000 (Qld)
T: +61 3 9037 4755 (Vic)
E: sales@fusionqld.com.au
W: fusionqld.com.au