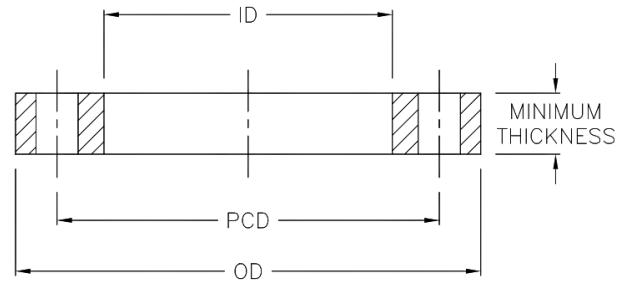
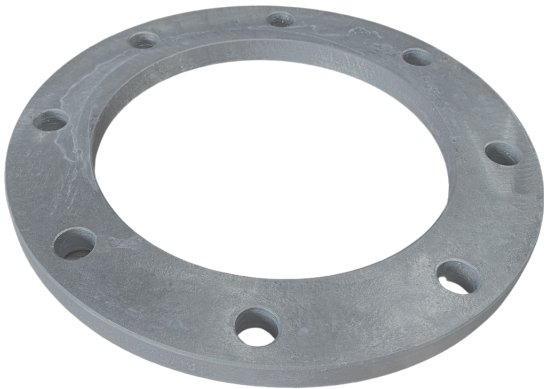


TECHNICAL DATA | GALVANISED STEEL BACKING RING TABLE D

Standards: AS4087
 Size Range: 110mm - 1000mm
 Materials: Galvanised Steel
 Pressure Rating: PN16



| Nominal Pipe OD mm | OD mm | ID mm | Thickness mm | PCD mm | Bolt Hole No. x Dia | Bolt Size mm | Code |
|--------------------|-------|-------|--------------|--------|---------------------|--------------|-----------|
| 110 | 215 | 128 | 13 | 178 | 4 x 18 | M16 | BWBRD110 |
| 160 | 280 | 178 | 13 | 235 | 8 x 18 | M16 | BWBRD160 |
| 180 | 280 | 195 | 13 | 235 | 8 x 18 | M16 | BWBRD180 |
| 200 | 335 | 235 | 19 | 292 | 8 x 18 | M16 | BWBRD200 |
| 225 | 335 | 238 | 19 | 292 | 8 x 18 | M16 | BWBRD225 |
| 250 | 405 | 288 | 19 | 356 | 8 x 22 | M20 | BWBRD250 |
| 280 | 405 | 294 | 19 | 356 | 8 x 22 | M20 | BWBRD280 |
| 315 | 455 | 338 | 23 | 406 | 12 x 22 | M20 | BWBRD315 |
| 450 | 640 | 470 | 30 | 584 | 12 x 26 | M24 | BWBRD450 |
| 630 | 825 | 645 | 48 | 756 | 16 x 30 | M27 | BWBRD630 |
| 710 | 910 | 740 | 56 | 845 | 20 x 30 | M27 | BWBRD710 |
| 1000 | 1255 | 1050 | 66 | 1175 | 24 x 36 | M33 | BWBRD1000 |

Note:

Installation should always be performed by a licensed operator. As the thicknesses of these flanges differ, it is the responsibility of the licensed installer to check the pressure rating of the flange to be installed, is suitable for the system which it is being used on. Correct installation procedures should always be followed.

The drawings, materials and specifications outlined are subject to change without notice due to the continuous improvements and development of our product range.

FUSION QLD PTY LTD

ABN: 42 987 067 369
 13 Vision Court, Noosaville, QLD, 4566
 42-44 South Link, Dandenong, VIC, 3175

CONTACT

T: +61 7 5474 3000 (Qld)
 T: +61 3 9037 4755 (Vic)
 E: sales@fusionqld.com.au
 W: fusionqld.com.au

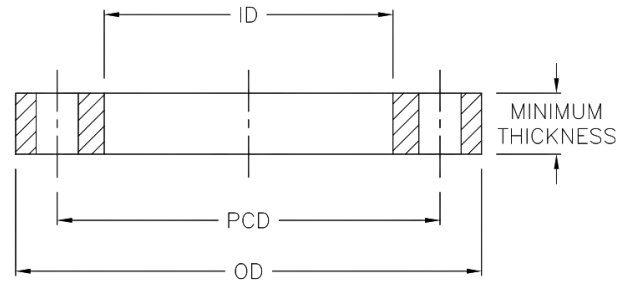
TECHNICAL DATA | GALVANISED STEEL BACKING RING TABLE D

Standards: Compatible with AS4087 and AS2129

Size Range: 315mm x 10" - 450mm x 15"

Materials: Galvanised Steel

Pressure Rating: PN16



| Nominal Pipe OD mm x inch | OD mm | ID mm | Thickness mm | PCD mm | Bolt Hole No. x Dia | Bolt Size mm | Code |
|------------------------------|----------|----------|-----------------|-----------|------------------------|-----------------|------------|
| 315mm x 10" | 405 | 318 | 19 | 356 | 8 x 22 | M20 | BWBRD31510 |
| 315mm x 10" | 405 | 308 | 19 | 356 | 12 x 22 | M20 | BWBRE31510 |
| 355mm x 12" | 455 | 361 | 23 | 406 | 12 x 22 | M20 | BWBRD35512 |
| 400mm x 15" | 550 | 406 | 30 | 495 | 12 x 26 | M24 | BWBRD40015 |
| 450mm x 15" | 580 | 455 | 30 | 495 | 12 x 26 | M24 | BWBRD45015 |

Note:

Installation should always be performed by a licensed operator. As the thicknesses of these flanges differ, it is the responsibility of the licensed installer to check the pressure rating of the flange to be installed, is suitable for the system which it is being used on. Correct installation procedures should always be followed.

The drawings, materials and specifications outlined are subject to change without notice due to the continuous improvements and development of our product range.

FUSION QLD PTY LTD

ABN: 42 987 067 369
13 Vision Court, Noosaville, QLD, 4566
42-44 South Link, Dandenong, VIC, 3175

CONTACT

T: +61 7 5474 3000 (Qld)
T: +61 3 9037 4755 (Vic)
E: sales@fusionqld.com.au
W: fusionqld.com.au