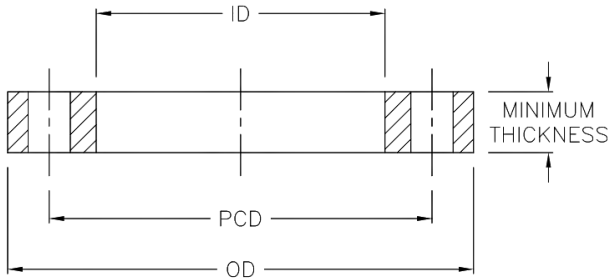


TECHNICAL DATA | STAINLESS STEEL BACKING RING ANSI 150

Standards: ANSI
 Size Range: 20mm - 800mm
 Materials: Stainless Steel 316
 Pressure Rating: ANSI 150



Nominal Pipe OD mm	OD mm	ID mm	Thickness mm	PCD mm	Bolt Hole No. x Dia	Bolt Size inch	Code
20	90	28	11.2	60.5	4 x 16	1/2"	BWBRSSA20
25	98	34	12.8	70	4 x 16	1/2"	BWBRSSA25
32	108	42	14.2	79.5	4 x 16	1/2"	BWBRSSA32
40	117	51	15.7	89	4 x 16	1/2"	BWBRSSA40
50	127	62	17.5	98.5	4 x 16	1/2"	BWBRSSA50
63	152	78	19	120.5	4 x 20	5/8"	BWBRSSA63
75	178	92	22.3	139.5	4 x 20	5/8"	BWBRSSA75
90	191	108	23.9	152	4 x 20	5/8"	BWBRSSA90
110	229	128	23.9	190.5	8 x 20	5/8"	BWBRSSA110
125	254	140	23.9	216	8 x 22	3/4"	BWBRSSA125
140	254	158	23.9	216	8 x 22	3/4"	BWBRSSA140
160	279	178	25.4	241	8 x 22	3/4"	BWBRSSA160
180	279	195	25.4	241	8 x 22	3/4"	BWBRSSA180
200	343	235	28.4	298.5	8 x 22	3/4"	BWBRSSA200
225	343	238	28.4	298.5	8 x 22	3/4"	BWBRSSA225

Note:

Installation should always be performed by a licensed operator. As the thicknesses of these flanges differ, it is the responsibility of the licensed installer to check the pressure rating of the flange to be installed, is suitable for the system which it is being used on. Correct installation procedures should always be followed.

The drawings, materials and specifications outlined are subject to change without notice due to the continuous improvements and development of our product range.

FUSION QLD PTY LTD

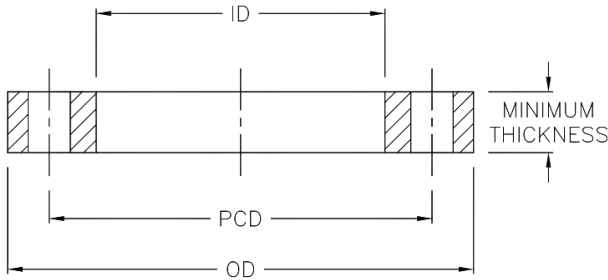
ABN: 42 987 067 369
 13 Vision Court, Noosaville, QLD, 4566
 42-44 South Link, Dandenong, VIC, 3175

CONTACT

T: +61 7 5474 3000 (Qld)
 T: +61 3 9037 4755 (Vic)
 E: sales@fusionqld.com.au
 W: fusionqld.com.au

TECHNICAL DATA | STAINLESS STEEL BACKING RING ANSI 150

Standards: ANSI
 Size Range: 20mm - 800mm
 Materials: Stainless Steel 316
 Pressure Rating: ANSI 150



Nominal Pipe OD mm	OD mm	ID mm	Thickness mm	PCD mm	Bolt Hole No. x Dia	Bolt Size inch	Code
250	406	288	30.2	362	12 x 26	7/8"	BWBRSSA250
280	406	294	30.2	362	12 x 26	7/8"	BWBRSSA280
315	482	345	31.8	432	12 x 26	7/8"	BWBRSSA315
355	533	376	35	476	12 x 30	1"	BWBRSSA355
400	600	430	36.6	540	16 x 30	1"	BWBRSSA400
450	635	480	39.6	578	16 x 33	1.1/8"	BWBRA450
500	700	533	43	635	20 x 33	1.1/8"	BWBRSSA500
560	750	618	48	692	20 x 36	1.1/8"	BWBRSSA560
630	815	660	47.8	750	20 x 36	1.1/4"	BWBRSSA630
710	925	740	69.9	863.6	28 x 36	1.1/4"	BWBRSSA710
800	1060	835	81	977.9	28 x 41	1.3/4"	BWBRSSA800

Note:

Installation should always be performed by a licensed operator. As the thicknesses of these flanges differ, it is the responsibility of the licensed installer to check the pressure rating of the flange to be installed, is suitable for the system which it is being used on. Correct installation procedures should always be followed.

The drawings, materials and specifications outlined are subject to change without notice due to the continuous improvements and development of our product range.

FUSION QLD PTY LTD

ABN: 42 987 067 369
 13 Vision Court, Noosaville, QLD, 4566
 42-44 South Link, Dandenong, VIC, 3175

CONTACT

T: +61 7 5474 3000 (Qld)
 T: +61 3 9037 4755 (Vic)
 E: sales@fusionqld.com.au
 W: fusionqld.com.au