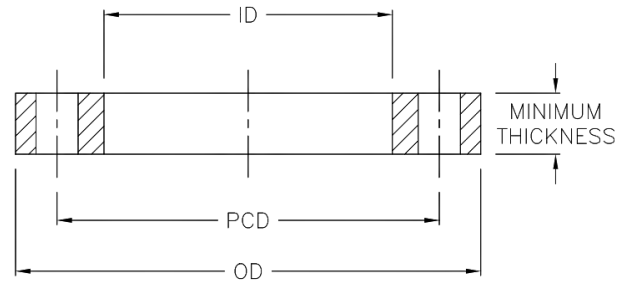


TECHNICAL DATA | STAINLESS STEEL BACKING RING TABLE D

Standards: AS4087
 Size Range: 110mm - 1200mm
 Materials: Stainless Steel 316
 Pressure Rating: PN16



Nominal Pipe OD mm	OD mm	ID mm	Thickness mm	PCD mm	Bolt Hole No. x Dia	Bolt Size mm	Code
110	215	128	13	178	4 x 18	M16	BWBRSSD110
160	280	178	13	235	8 x 18	M16	BWBRSSD160
180	280	195	13	235	8 x 18	M16	BWBRSSD180
200	335	235	19	292	8 x 18	M16	BWBRSSD200
225	335	238	19	292	8 x 18	M16	BWBRSSD225
250	405	288	19	356	8 x 22	M20	BWBRSSD250
280	405	294	19	356	8 x 22	M20	BWBRSSD280
315	455	338	23	406	12 x 22	M20	BWBRSSD315
450	640	470	30	584	12 x 26	M24	BWBRSSD450
630	825	645	48	756	16 x 30	M27	BWBRSSD630
710	910	740	56	845	20 x 30	M27	BWBRSSD710
1000	1255	1050	66	1175	24 x 36	M33	BWBRSSD1000
1200	1490	1240	75	1410	32 x 36	M33	BWBRSSD1200

Note:

Installation should always be performed by a licensed operator. As the thicknesses of these flanges differ, it is the responsibility of the licensed installer to check the pressure rating of the flange to be installed, is suitable for the system which it is being used on. Correct installation procedures should always be followed.

The drawings, materials and specifications outlined are subject to change without notice due to the continuous improvements and development of our product range.

FUSION QLD PTY LTD

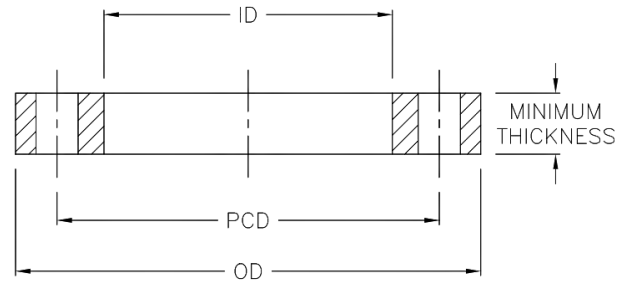
ABN: 42 987 067 369
 13 Vision Court, Noosaville, QLD, 4566
 42-44 South Link, Dandenong, VIC, 3175

CONTACT

T: +61 7 5474 3000 (Qld)
 T: +61 3 9037 4755 (Vic)
 E: sales@fusionqld.com.au
 W: fusionqld.com.au

TECHNICAL DATA | STAINLESS STEEL BACKING RING TABLE D

Standards: Compatible with AS4087
 Size Range: 125mm x 4" - 630mm x 24"
 Materials: Stainless Steel 316
 Pressure Rating: PN16



Nominal Pipe OD mm x inch	OD mm	ID mm	Thickness mm	PCD mm	Bolt Hole No. x Dia	Bolt Size mm	Code
125mm x 4"	215	138	13	178	4 x 18	M16	BWBRSSD1254
200mm x 6"	280	204	13	235	8 x 18	M16	BWBRSSD2006
225mm x 9"	370	238	19	324	8 x 18	M16	BWBRSSD2259
250mm x 9"	370	262	19	324	8 x 18	M16	BWBRSSD2509
250mm x 8"	335	256	19	292	8 x 18	M16	BWBRSSD2508
280mm x 9"	370	285	19	324	8 x 18	M16	BWBRSSD2809
315mm x 10"	405	318	19	356	8 x 22	M20	BWBRSSD31510
355mm x 12"	455	361	23	406	12 x 22	M20	BWBRSSD35512
400mm x 15"	550	406	30	495	12 x 26	M24	BWBRDSS40015
450mm x 15"	580	455	30	495	12 x 26	M24	BWBRSSD45015
500mm x 18"	640	508	30	584	12 x 26	M24	BWBRSSD50018
560mm x 20"	705	568	38	641	16 x 26	M24	BWBRDSS56020
630mm x 24"	825	645	48	756	16 x 30	M27	BWBRSSD63024

Note:

Installation should always be performed by a licensed operator. As the thicknesses of these flanges differ, it is the responsibility of the licensed installer to check the pressure rating of the flange to be installed, is suitable for the system which it is being used on. Correct installation procedures should always be followed.

The drawings, materials and specifications outlined are subject to change without notice due to the continuous improvements and development of our product range.

FUSION QLD PTY LTD

ABN: 42 987 067 369
 13 Vision Court, Noosaville, QLD, 4566
 42-44 South Link, Dandenong, VIC, 3175

CONTACT

T: +61 7 5474 3000 (Qld)
 T: +61 3 9037 4755 (Vic)
 E: sales@fusionqld.com.au
 W: fusionqld.com.au