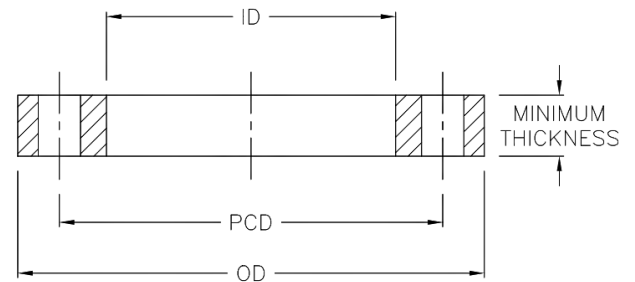


TECHNICAL DATA | STAINLESS STEEL BACKING RING TABLE E

Standards: AS2129
Size Range: 110mm - 1000mm
Materials: Stainless Steel 316
Pressure Rating: PN16



Nominal Pipe OD mm	OD mm	ID mm	Thickness mm	PCD mm	Bolt Hole No. x Dia	Bolt Size mm	Code
110	215	128	13	178	8 x 18	M16	BWBRSE1110
160	280	178	17	235	8 x 22	M20	BWBRSE160
180	280	195	17	235	8 x 22	M20	BWBRSE180
200	335	235	19	292	8 x 22	M20	BWBRSE200
225	335	238	19	292	8 x 22	M20	BWBRSE225
250	405	288	22	356	12 x 22	M20	BWBRSE250
280	405	294	22	356	12 x 22	M20	BWBRSE280
315	455	346	25	406	12 x 26	M24	BWBRSE315
450	640	480	35	584	16 x 26	M24	BWBRSE450
630	825	645	48	756	16 x 33	M30	BWBRSE630
710	910	740	51	845	20 x 33	M30	BWBRSE710
1000	1255	1050	67	1175	24 x 39	M36	BWBRSE1000

Note:

Installation should always be performed by a licensed operator. As the thicknesses of these flanges differ, it is the responsibility of the licensed installer to check the pressure rating of the flange to be installed, is suitable for the system which it is being used on. Correct installation procedures should always be followed.

The drawings, materials and specifications outlined are subject to change without notice due to the continuous improvements and development of our product range.

FUSION QLD PTY LTD

ABN: 42 987 067 369
13 Vision Court, Noosaville, QLD, 4566
42-44 South Link, Dandenong, VIC, 3175

CONTACT

T: +61 7 5474 3000 (Qld)
T: +61 3 9037 4755 (Vic)
E: sales@fusionqld.com.au
W: fusionqld.com.au