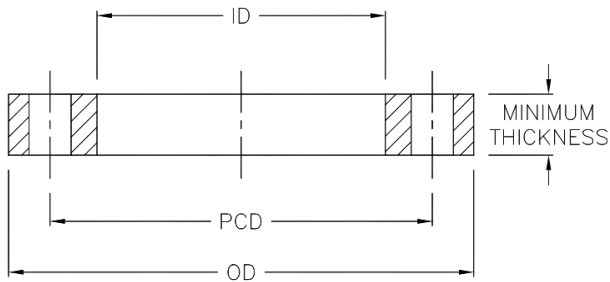


TECHNICAL DATA | STAINLESS STEEL BLIND FLANGE ANSI 150

Standards: ANSI
Size Range: 20mm - 800mm
Materials: Stainless Steel 316
Pressure Rating: ANSI 150



Nominal Pipe OD mm	OD mm	ID mm	Thickness mm	PCD mm	Bolt Hole No. x Dia	Bolt Size inch	Code
20	90	N/A	11.2	60.5	4 x 16	1/2"	BWBFA020
25	98	N/A	12.8	70	4 x 16	1/2"	BWBFA025
32	108	N/A	14.2	79.5	4 x 16	1/2"	BWBFA32
40	117	N/A	15.7	89	4 x 16	1/2"	BWBFA40
50	127	N/A	17.5	98.5	4 x 16	1/2"	BWBFA50
63	152	N/A	19	120.5	4 x 20	5/8"	BWBFA63
75	178	N/A	22.3	139.5	4 x 20	5/8"	BWBFA75
90	191	N/A	23.9	152	4 x 20	5/8"	BWBFA90
110	229	N/A	23.9	190.5	8 x 20	5/8"	BWBFA110
125	254	N/A	23.9	216	8 x 22	3/4"	BWBFA125
140	254	N/A	23.9	216	8 x 22	3/4"	BWBFA140
160	279	N/A	25.4	241	8 x 22	3/4"	BWBFA160
180	279	N/A	25.4	241	8 x 22	3/4"	BWBFA180
200	343	N/A	28.4	298.5	8 x 22	3/4"	BWBFA200

Note:

Installation should always be performed by a licensed operator. As the thicknesses of these flanges differ, it is the responsibility of the licensed installer to check the pressure rating of the flange to be installed, is suitable for the system which it is being used on. Correct installation procedures should always be followed.

The drawings, materials and specifications outlined are subject to change without notice due to the continuous improvements and development of our product range.

FUSION QLD PTY LTD

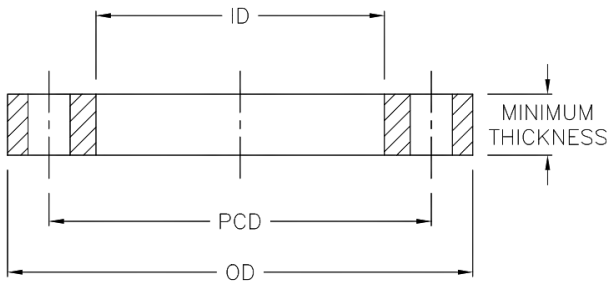
ABN: 42 987 067 369
13 Vision Court, Noosaville, QLD, 4566
42-44 South Link, Dandenong, VIC, 3175

CONTACT

T: +61 7 5474 3000 (Qld)
T: +61 3 9037 4755 (Vic)
E: sales@fusionqld.com.au
W: fusionqld.com.au

TECHNICAL DATA | STAINLESS STEEL BLIND FLANGE ANSI 150

Standards: ANSI
Size Range: 20mm - 800mm
Materials: Stainless Steel 316
Pressure Rating: ANSI 150



Nominal Pipe OD mm	OD mm	ID mm	Thickness mm	PCD mm	Bolt Hole No. x Dia	Bolt Size inch	Code
225	343	N/A	28.4	298.5	8 x 22	3/4"	BWBFA225
250	406	N/A	30.2	362	12 x 26	7/8"	BWBFA250
280	406	N/A	30.2	362	12 x 26	7/8"	BWBFA280
315	482	N/A	31.8	432	12 x 26	7/8"	BWBFA315
355	533	N/A	35	476	12 x 30	1"	BWBFA355
400	600	N/A	36.6	540	16 x 30	1"	BWBFA400
450	635	N/A	39.6	578	16 x 33	1.1/8"	BWBFA450
500	700	N/A	43	635	20 x 33	1.1/8"	BWBFA500
560	750	N/A	48	692	20 x 36	1.1/8"	BWBFA560
630	815	N/A	47.8	750	20 x 36	1.1/4"	BWBFA630
710	925	N/A	69.9	863.6	28 x 36	1.1/4"	BWBFA710
800	1060	N/A	81	977.9	28 x 41	1.3/4"	BWBFA800

Note:

Installation should always be performed by a licensed operator. As the thicknesses of these flanges differ, it is the responsibility of the licensed installer to check the pressure rating of the flange to be installed, is suitable for the system which it is being used on. Correct installation procedures should always be followed.

The drawings, materials and specifications outlined are subject to change without notice due to the continuous improvements and development of our product range.

FUSION QLD PTY LTD

ABN: 42 987 067 369
13 Vision Court, Noosaville, QLD, 4566
42-44 South Link, Dandenong, VIC, 3175

CONTACT

T: +61 7 5474 3000 (Qld)
T: +61 3 9037 4755 (Vic)
E: sales@fusionqld.com.au
W: fusionqld.com.au