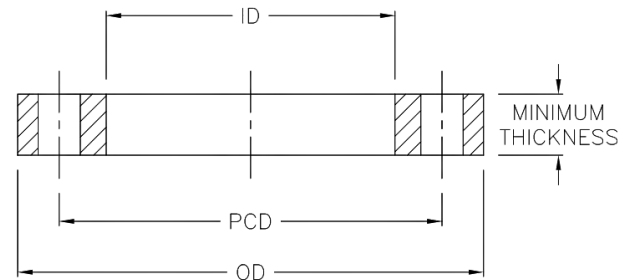
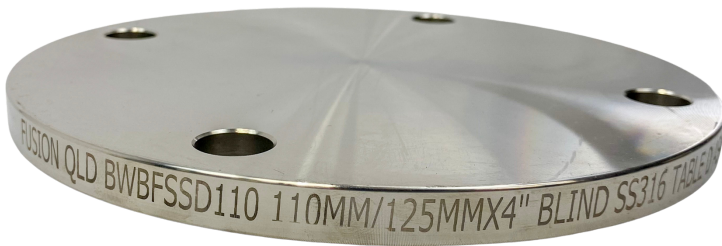


TECHNICAL DATA | STAINLESS STEEL BLIND FLANGE TABLE D

Standards: AS4087
Size Range: 110mm - 1000mm
Materials: Stainless Steel 316
Pressure Rating: PN16



Nominal Pipe OD mm	OD mm	ID mm	Thickness mm	PCD mm	Bolt Hole No. x Dia	Bolt Size mm	Code
110	215	N/A	13	178	4 x 18	M16	BWBFSSD110
180	280	N/A	13	235	8 x 18	M16	BWBFSSD160
200	335	N/A	19	292	8 x 18	M16	BWBFSSD200
250	405	N/A	19	356	8 x 22	M20	BWBFSSD250
315	455	N/A	23	406	12 x 22	M20	BWBFSSD315
450	640	N/A	30	584	12 x 26	M24	BWBFSSD450
630	825	N/A	48	756	16 x 30	M27	BWBFSSD630
710	910	N/A	56	845	20 x 30	M27	BWBFSSD710
1000	1255	N/A	66	1175	24 x 36	M33	BWBFSSD1000

Note:

Installation should always be performed by a licensed operator. As the thicknesses of these flanges differ, it is the responsibility of the licensed installer to check the pressure rating of the flange to be installed, is suitable for the system which it is being used on. Correct installation procedures should always be followed.

The drawings, materials and specifications outlined are subject to change without notice due to the continuous improvements and development of our product range.

FUSION QLD PTY LTD

ABN: 42 987 067 369
13 Vision Court, Noosaville, QLD, 4566
42-44 South Link, Dandenong, VIC, 3175

CONTACT

T: +61 7 5474 3000 (Qld)
T: +61 3 9037 4755 (Vic)
E: sales@fusionqld.com.au
W: fusionqld.com.au